



## Presence Observation

### Reed canarygrass

*Phalaris arundinacea*



**Record ID:** 14284

**Observer:** Sonya Wardell

**Source:** Chippewa Luce Mackinac Conservation District

**Latitude:** 46.41382179

**Longitude:** -84.59330608

**Area:** 1/2 acre to 1 acre

**Density:** Patchy

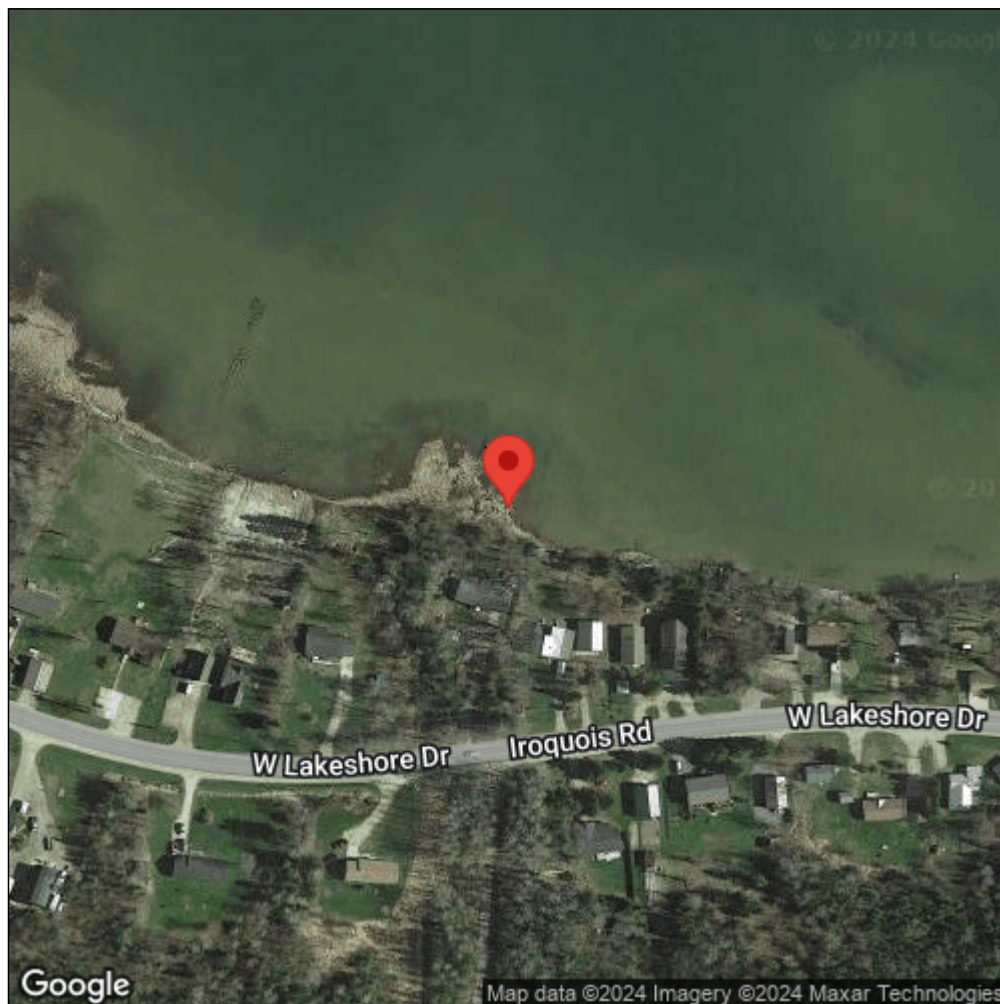
**Observation Date:** September 22, 2011

**Date Entered:** April 16, 2012

**Comments:** Waypoint Code: CCSWRC100 - Untreated // Southeast Bay Mills property, not Brimley.



Midwest Invasive Species  
Information Network



Source: MISIN. 2024. Midwest Invasive Species Information Network. Michigan State University - Applied Spatial Ecology and Technical Services Laboratory. This record is available online at <https://www.misin.msu.edu/report/misin/submit/summary/printRecord.php?obs=reprint&id=14284>