



## Presence Observation

### Purple loosestrife

*Lythrum salicaria*



**Record ID:** 1442

**Observer:** Ian Shackleford

**Source:** Ottawa National Forest

**Latitude:** 46.48239409

**Longitude:** -90.01956976

**Area:** Individual/Few/Several

**Density:** Not Reported

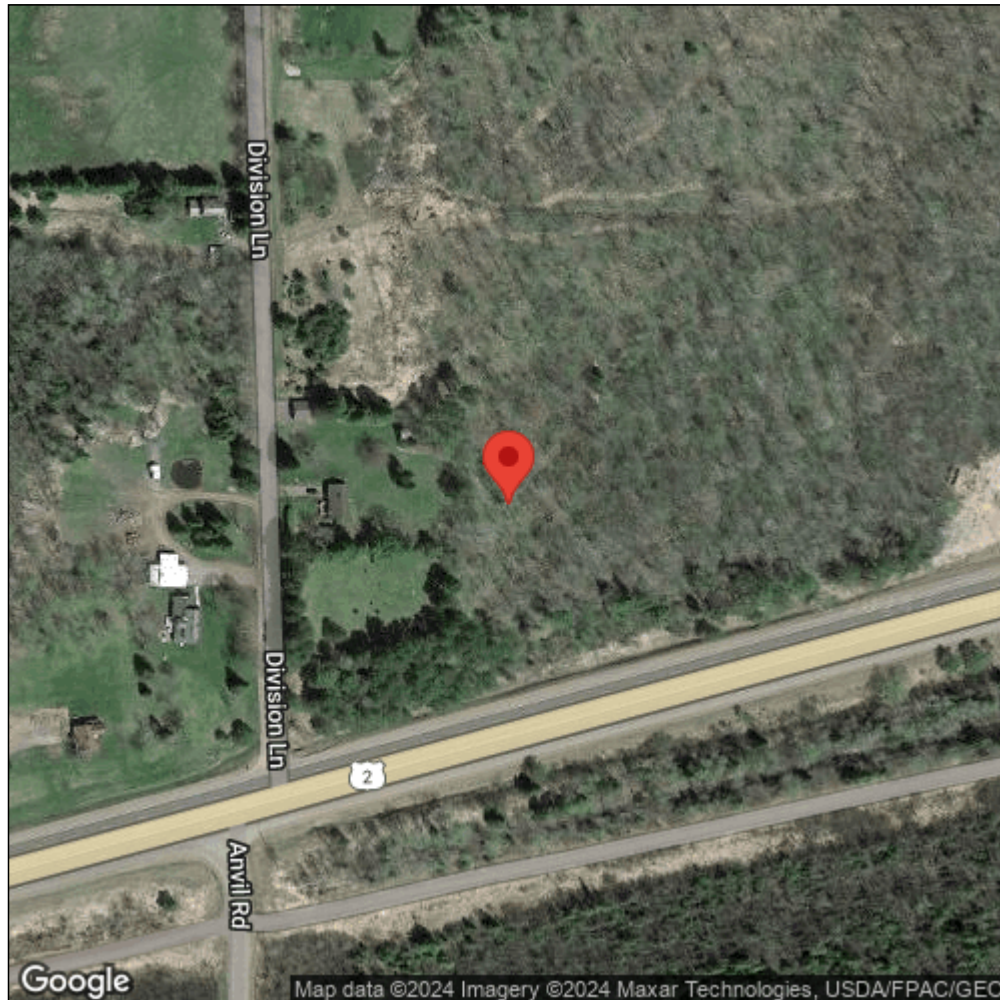
**Observation Date:** August 1, 2003

**Date Entered:** January 18, 2011

**Comments:** ONF Bulk load -- Anvil Road. North side of US-2 at Anvil Road.



Midwest Invasive Species  
Information Network



Source: MISIN. 2024. Midwest Invasive Species Information Network. Michigan State University - Applied Spatial Ecology and Technical Services Laboratory. This record is available online at <https://www.misin.msu.edu/report/misin/submit/summary/printRecord.php?obs=reprint&id=1442>