



Presence Observation

Purple loosestrife

Lythrum salicaria



Record ID: 14511

Observer: Bulk Upload

Source: Chippewa Luce Mackinac Conservation District

Latitude: 46.39698

Longitude: -85.51363

Area: Individual/Few/Several

Density: Monoculture

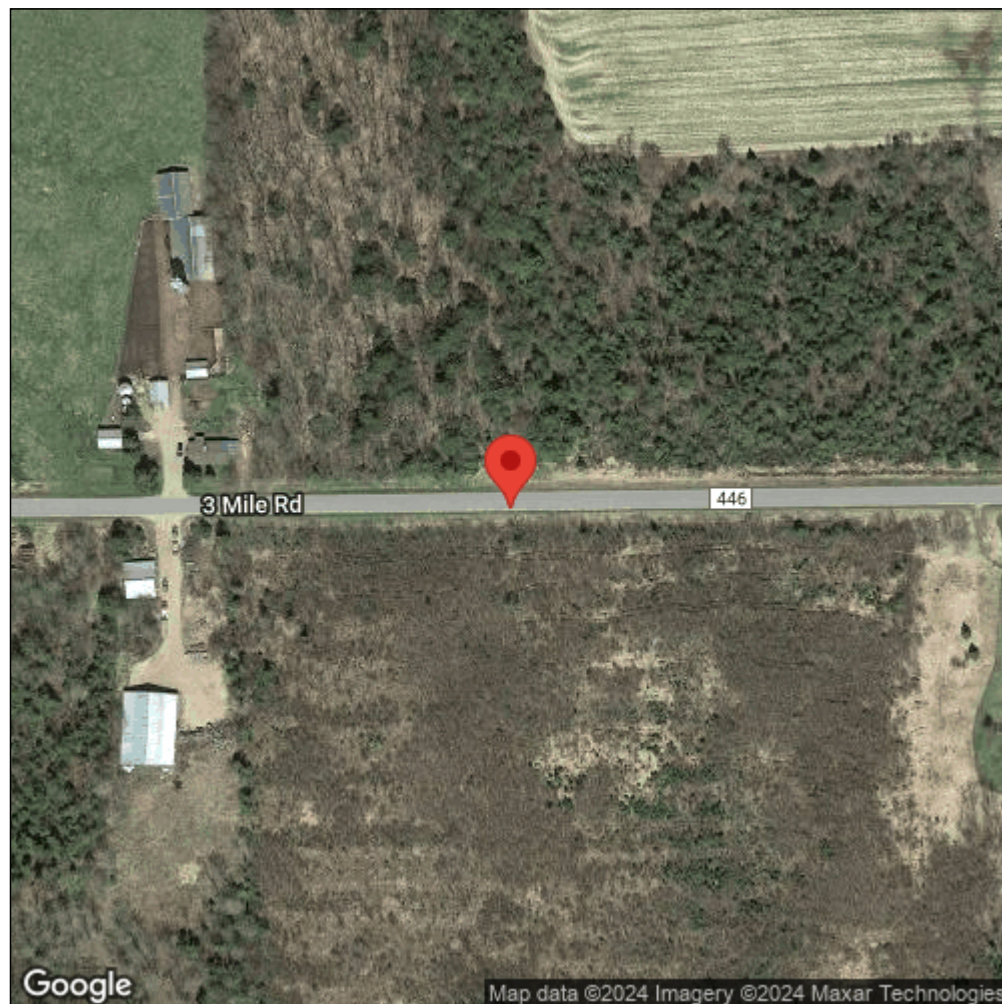
Observation Date: October 21, 2011

Date Entered: April 16, 2012

Comments: Original observer(s): Lisa Den Boer - Waypoint Code: LCLDPL016 - Untreated // LWMCD. County Road 446 just off M-123 ditch line.



Midwest Invasive Species
Information Network



Source: MISIN. 2024. Midwest Invasive Species Information Network. Michigan State University - Applied Spatial Ecology and Technical Services Laboratory. This record is available online at <https://www.misin.msu.edu/report/misin/submit/summary/printRecord.php?obs=reprint&id=14511>