



Midwest Invasive Species
Information Network

Presence Observation

Reed canarygrass

Phalaris arundinacea



Record ID: 14951

Observer: Ian Shackleford

Source: Ottawa National Forest

Latitude: 46.36063465

Longitude: -88.92935503

Area: Individual/Few/Several

Density: Not Reported

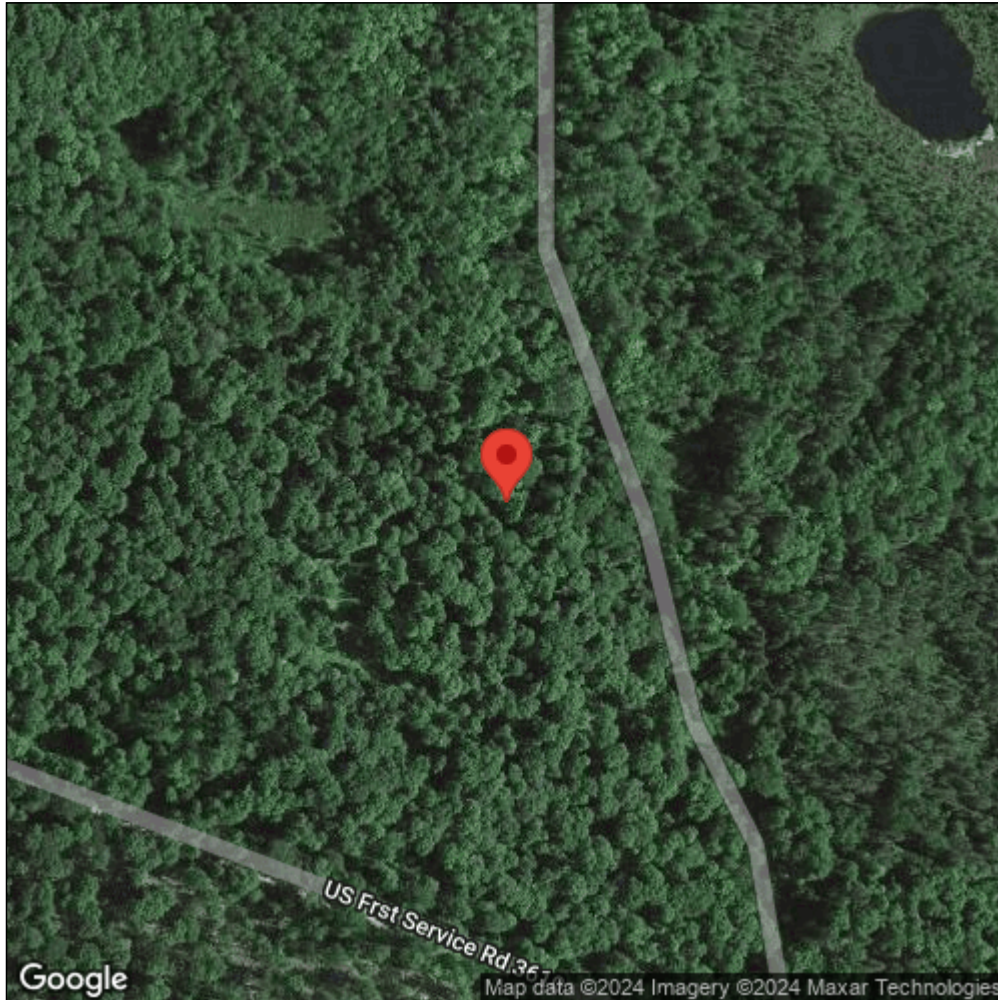
Observation Date: June 6, 1998

Date Entered: January 18, 2011

Comments: ONF Bulk load -- Robinson Lake Road.



Midwest Invasive Species
Information Network



Source: MISIN. 2024. Midwest Invasive Species Information Network. Michigan State University - Applied Spatial Ecology and Technical Services Laboratory. This record is available online at <https://www.misin.msu.edu/report/misin/submit/summary/printRecord.php?obs=reprint&id=14951>