



## Presence Observation

### Reed canarygrass

*Phalaris arundinacea*



**Record ID:** 15094

**Observer:** Ian Shackleford

**Source:** Ottawa National Forest

**Latitude:** 46.44780791

**Longitude:** -89.83770549

**Area:** less than 1000 sq ft

**Density:** Not Reported

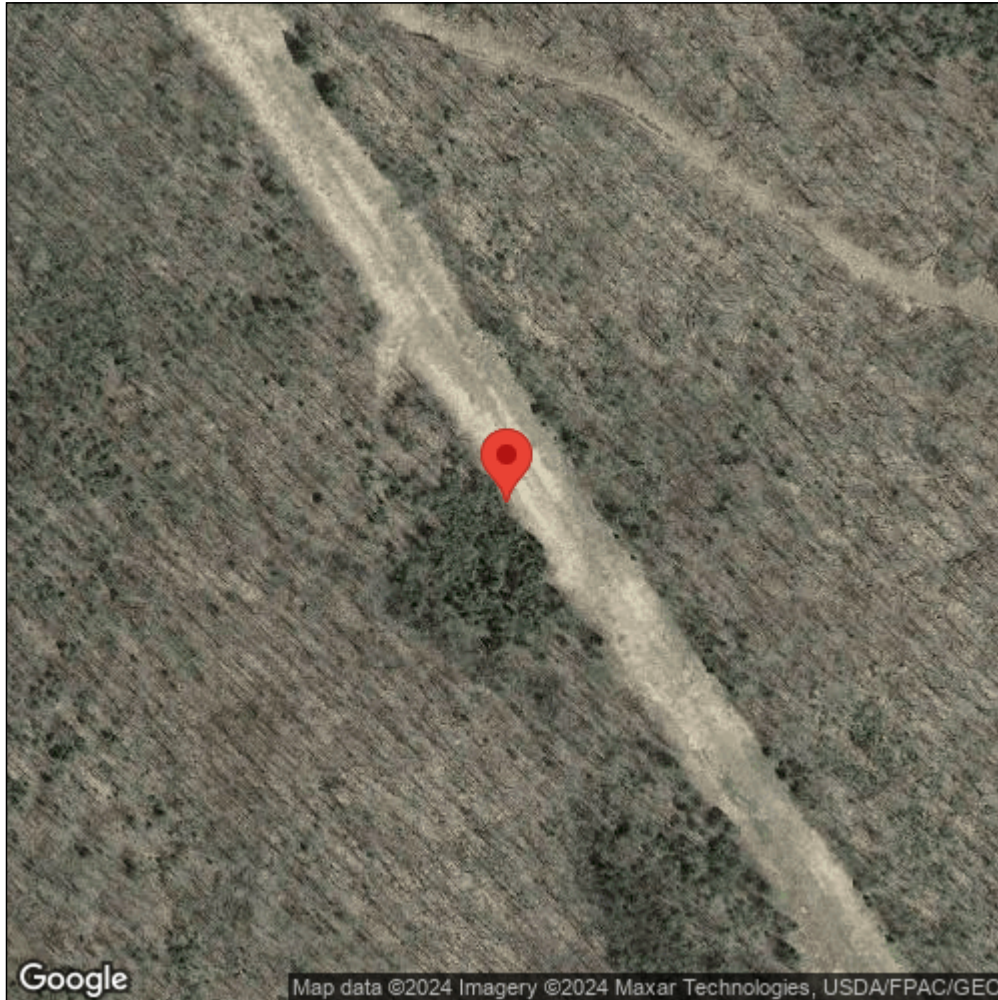
**Observation Date:** July 25, 2005

**Date Entered:** January 18, 2011

**Comments:** ONF Bulk load -- Milepost 414.6. Reed canarygrass is the dominant vegetation in this stretch - frequently.



Midwest Invasive Species  
Information Network



Source: MISIN. 2024. Midwest Invasive Species Information Network. Michigan State University - Applied Spatial Ecology and Technical Services Laboratory. This record is available online at <https://www.misin.msu.edu/report/misin/submit/summary/printRecord.php?obs=reprint&id=15094>