



## Presence Observation

### Reed canarygrass

*Phalaris arundinacea*



**Record ID:** 15391

**Observer:** Sonya Wardell

**Source:** Chippewa Luce Mackinac Conservation District

**Latitude:** 46.4164

**Longitude:** -84.6031

**Area:** Individual/Few/Several

**Density:** Dense

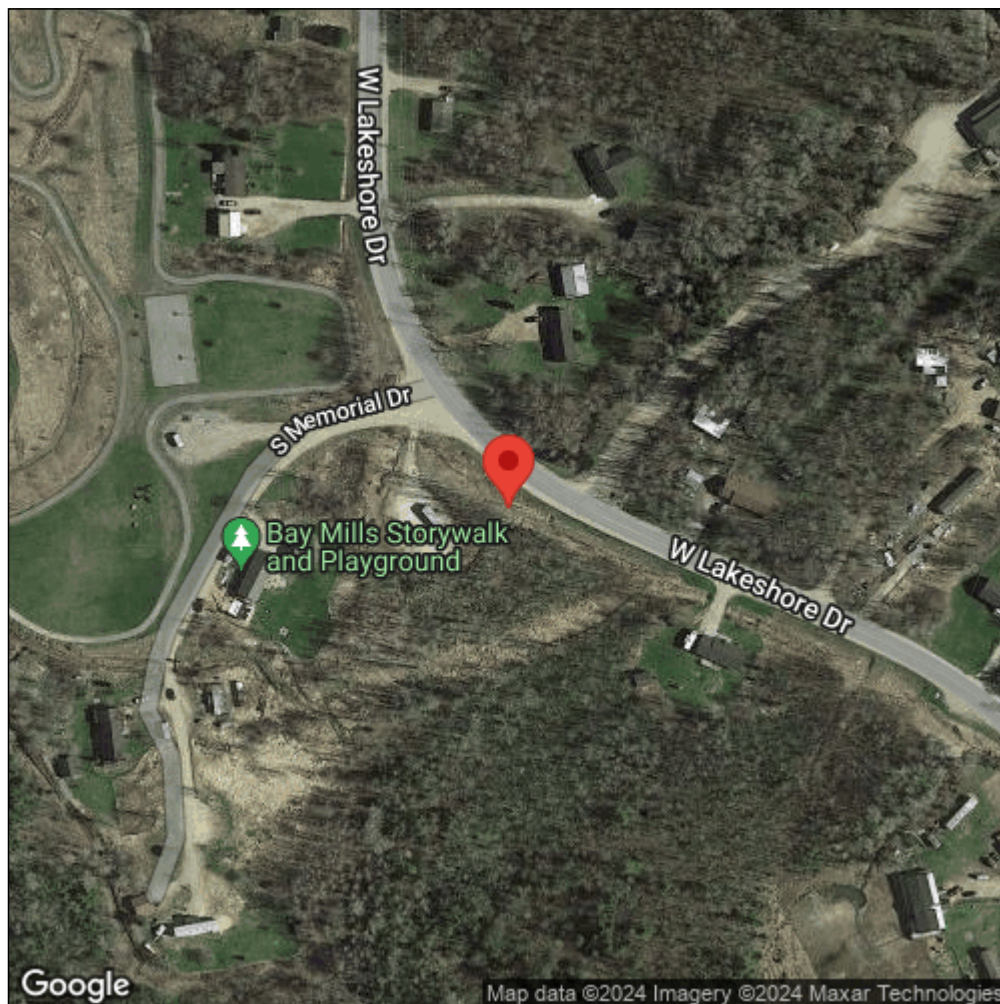
**Observation Date:** July 29, 2011

**Date Entered:** April 16, 2012

**Comments:** Waypoint Code: CCSWRC064 - Untreated // Bay Mills; roadside by Ash Preserve.



Midwest Invasive Species  
Information Network



Source: MISIN. 2024. Midwest Invasive Species Information Network. Michigan State University - Applied Spatial Ecology and Technical Services Laboratory. This record is available online at <https://www.misin.msu.edu/report/misin/submit/summary/printRecord.php?obs=reprint&id=15391>