



Presence Observation

Purple loosestrife

Lythrum salicaria



Record ID: 16670

Observer: Teri Grout

Source: Chippewa Luce Mackinac Conservation District

Latitude: 45.96948

Longitude: -86.26653

Area: Individual/Few/Several

Density: Sparse

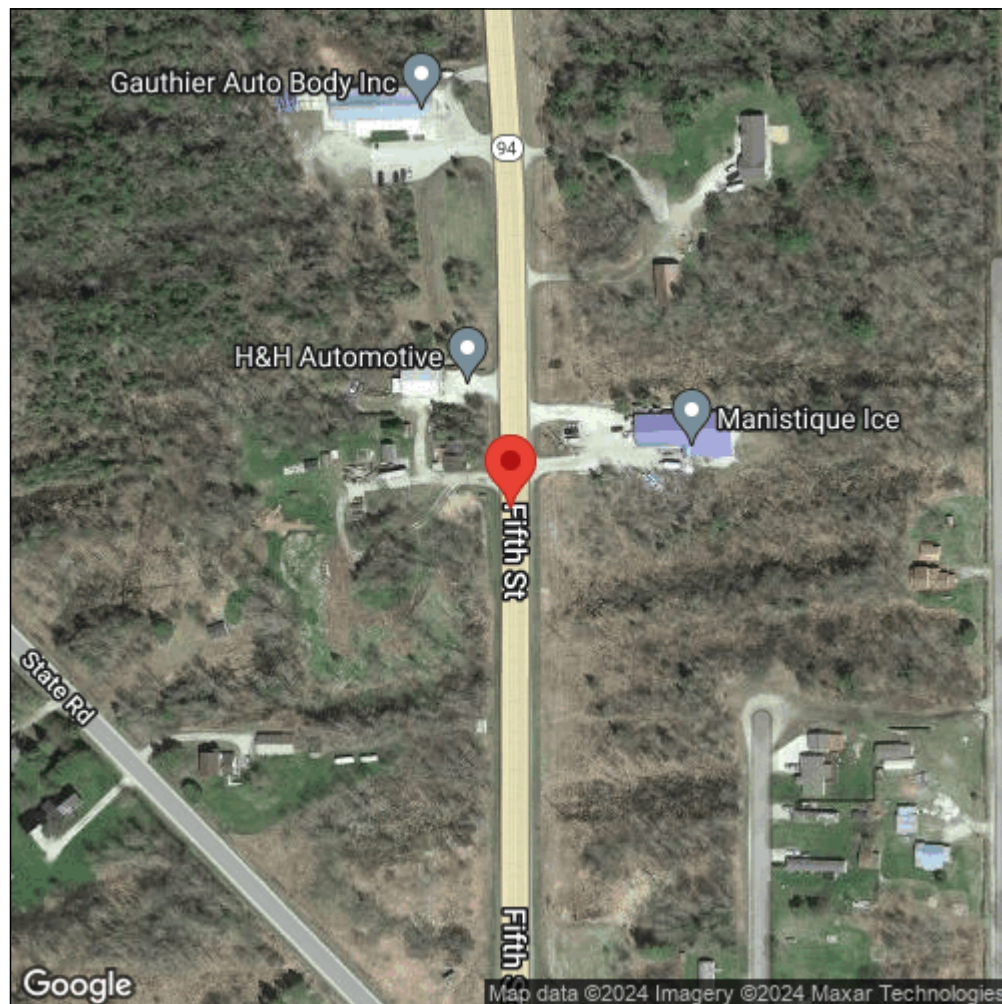
Observation Date: August 1, 2011

Date Entered: April 16, 2012

Comments: Waypoint Code: SCTGPL021 - Years Treated = 1 // Boardwalk - Manistique. Plant removed with roots.



Midwest Invasive Species
Information Network



Source: MISIN. 2024. Midwest Invasive Species Information Network. Michigan State University - Applied Spatial Ecology and Technical Services Laboratory. This record is available online at <https://www.misin.msu.edu/report/misin/submit/summary/printRecord.php?obs=reprint&id=16670>