



Presence Observation

Flowering rush

Butomus umbellatus



Record ID: 18068

Observer: Matt Ankney

Source: MI DNR Wildlife Division

Latitude: 41.99386

Longitude: -83.24302

Area: Not Reported

Density: Sparse

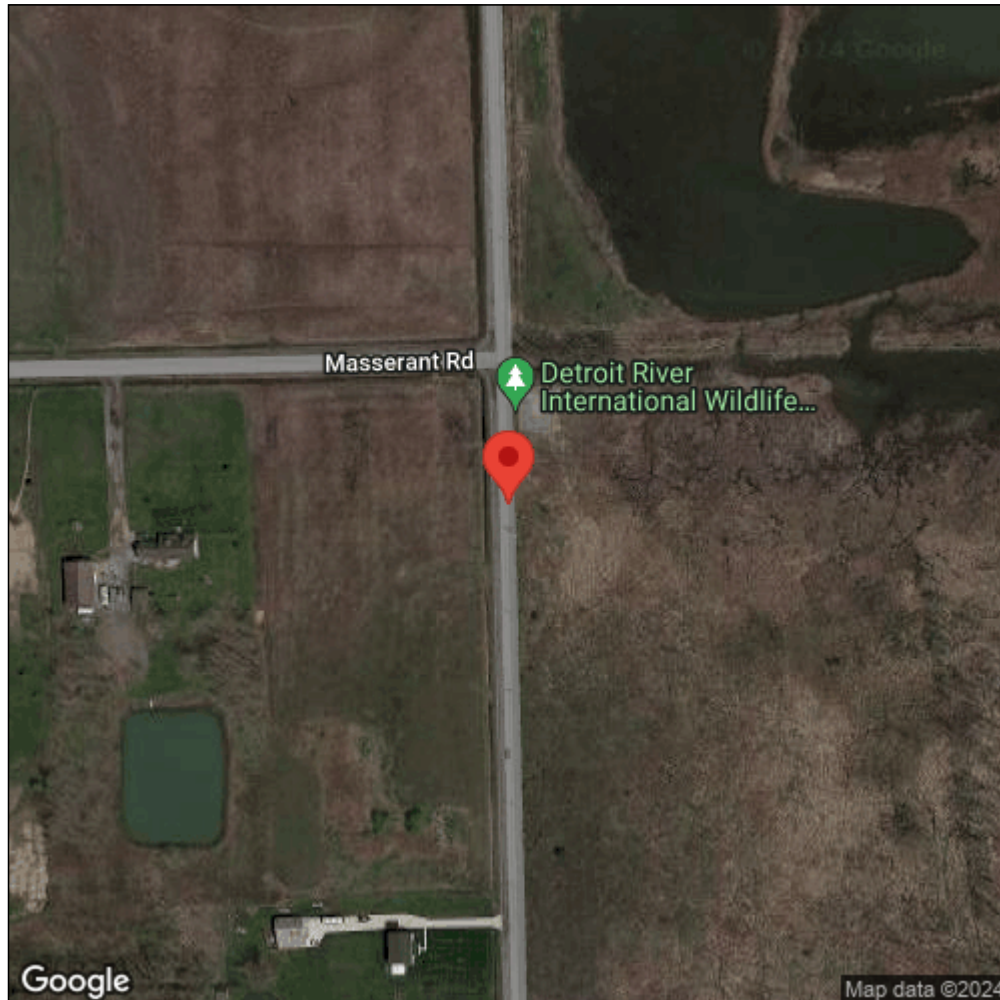
Observation Date: September 8, 2011

Date Entered: July 2, 2012

Comments: Original Observer(s): J. Gorchow and N. Uebbing // Site 061 - Flowering Rush is occurring throughout roadside ditches in Estral Beach area, primarily on residential area.



Midwest Invasive Species
Information Network



Source: MISIN. 2024. Midwest Invasive Species Information Network. Michigan State University - Applied Spatial Ecology and Technical Services Laboratory. This record is available online at <https://www.misin.msu.edu/report/misin/submit/summary/printRecord.php?obs=reprint&id=18068>