



Presence Observation

Reed canarygrass

Phalaris arundinacea



Record ID: 20017

Observer: Phyllis Higman

Source: Michigan Natural Features Inventory

Latitude: 44.26870994

Longitude: -84.6123122

Area: Not Reported

Density: Not Reported

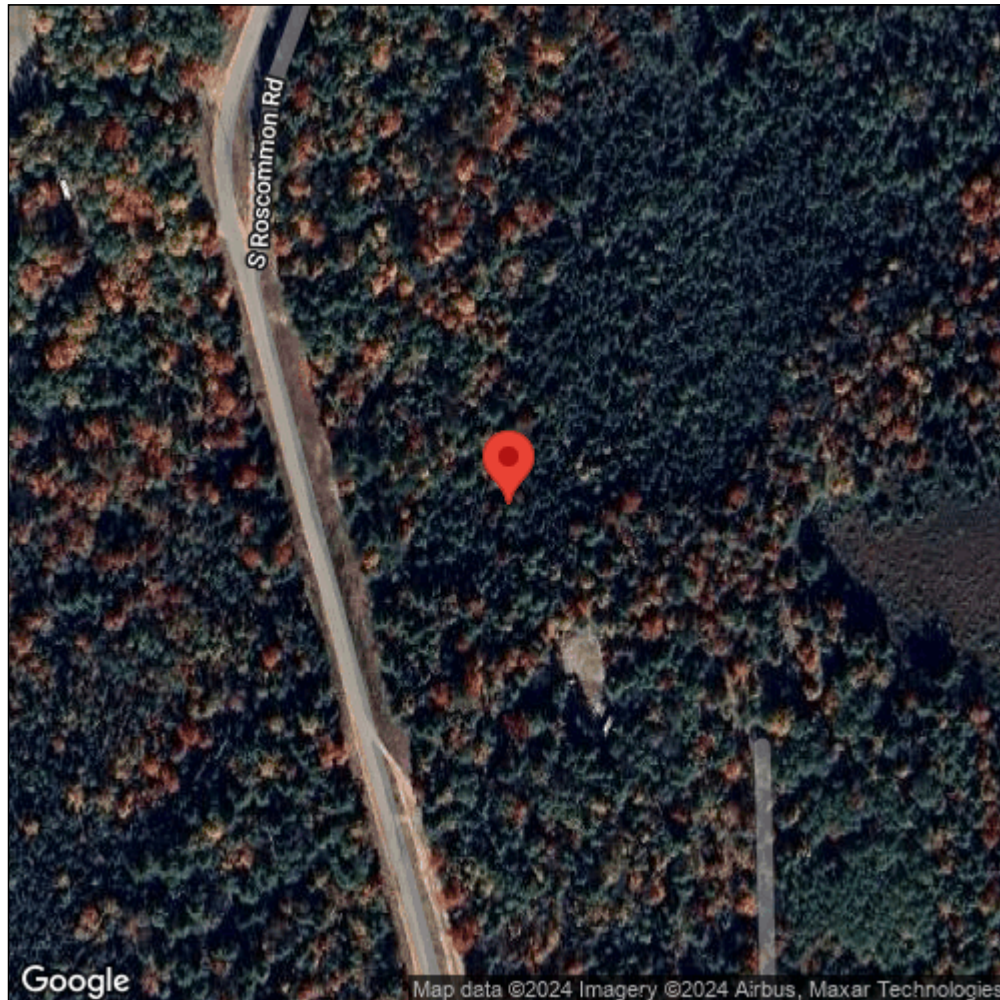
Observation Date: September 6, 2007

Date Entered: September 6, 2007

Comments: MNFI Bulk data submission.



Midwest Invasive Species
Information Network



Source: MISIN. 2024. Midwest Invasive Species Information Network. Michigan State University - Applied Spatial Ecology and Technical Services Laboratory. This record is available online at <https://www.misin.msu.edu/report/misin/submit/summary/printRecord.php?obs=reprint&id=20017>