



## Presence Observation

### Purple loosestrife

*Lythrum salicaria*



**Record ID:** 21

**Observer:** Phyllis Higman

**Source:** Michigan Natural Features Inventory

**Latitude:** 45.41870311

**Longitude:** -84.6102921

**Area:** Not Reported

**Density:** Not Reported

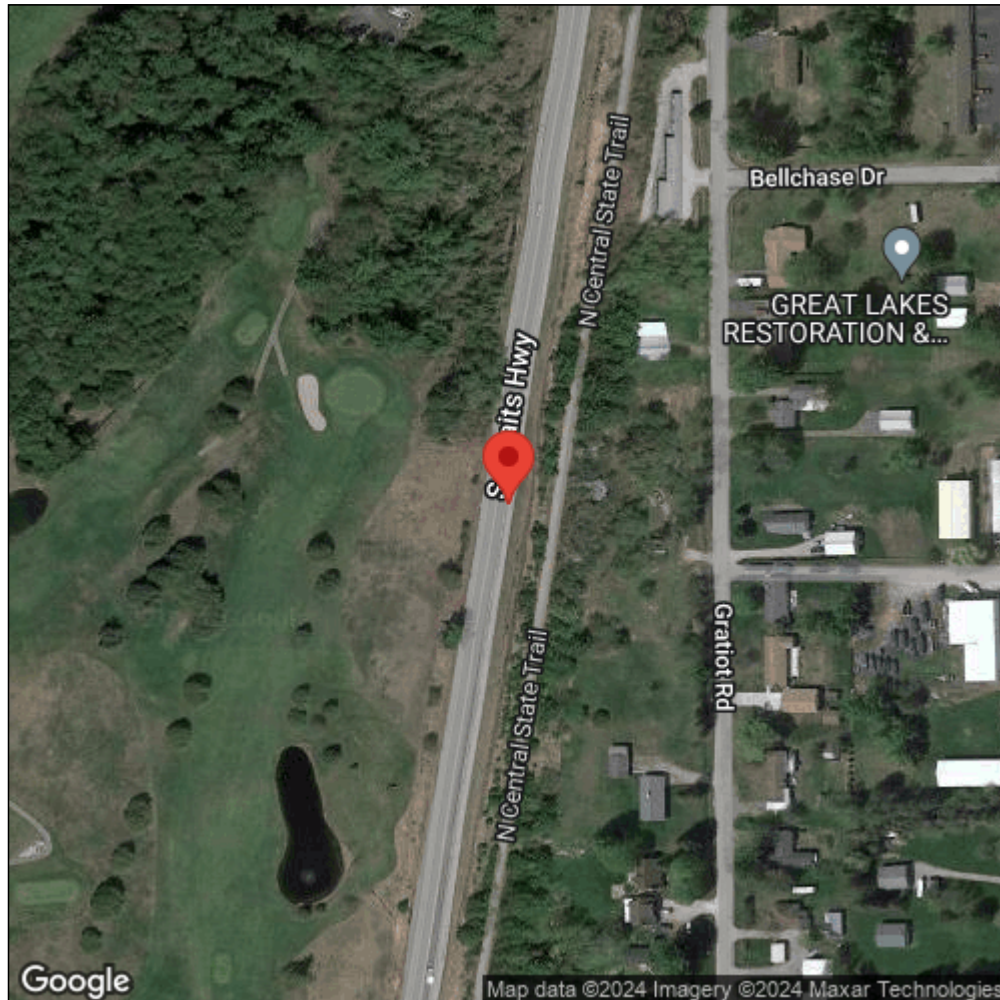
**Observation Date:** September 6, 2007

**Date Entered:** September 6, 2007

**Comments:** MNFI Bulk data submission.



Midwest Invasive Species  
Information Network



Source: MISIN. 2024. Midwest Invasive Species Information Network. Michigan State University - Applied Spatial Ecology and Technical Services Laboratory. This record is available online at <https://www.misin.msu.edu/report/misin/submit/summary/printRecord.php?obs=reprint&id=21>