



## Presence Observation

### Purple loosestrife

*Lythrum salicaria*



**Record ID:** 212739

**Observer:** Jennifer Johnson

**Source:** Michigan Department of Environmental Quality

**Latitude:** 42.54559

**Longitude:** -83.31093

**Area:** Individual/Few/Several

**Density:** Sparse

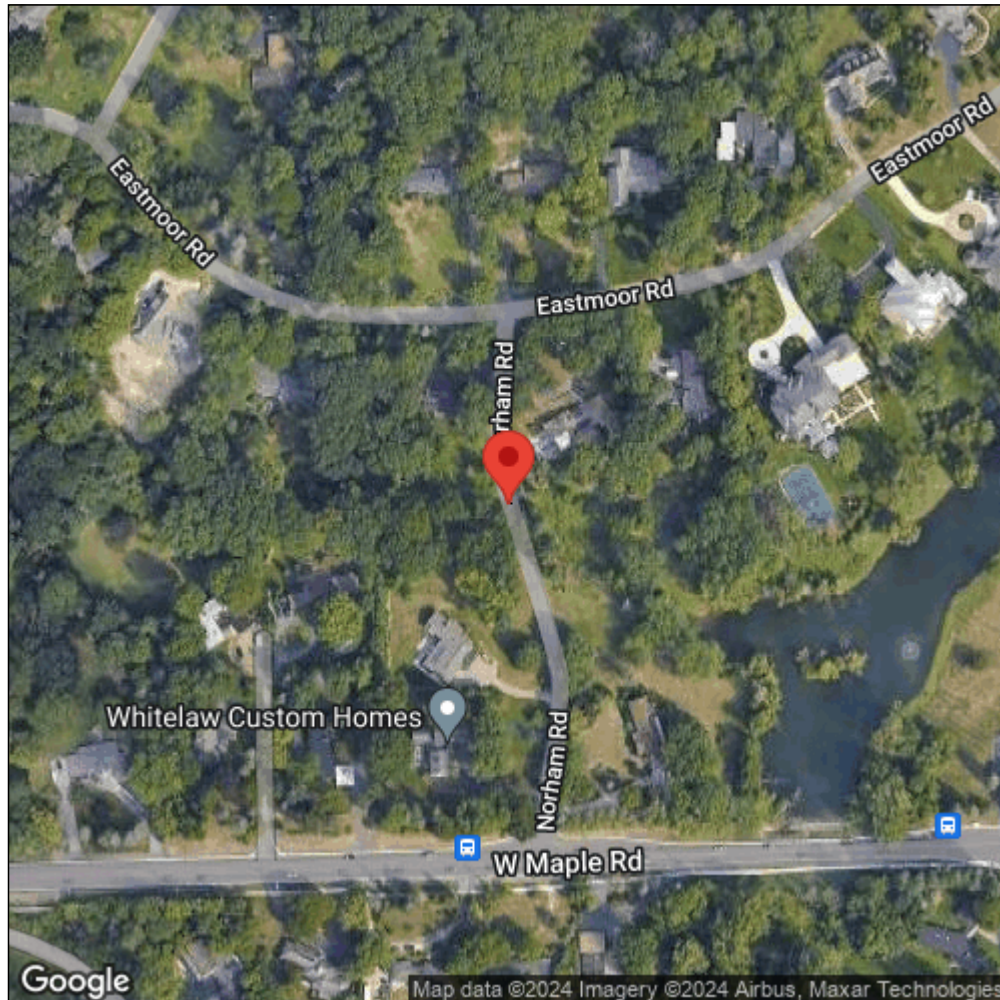
**Observation Date:** June 25, 2013

**Date Entered:** September 23, 2013

**Comments:** Site ID: MIS9-0934



Midwest Invasive Species  
Information Network



Source: MISIN. 2024. Midwest Invasive Species Information Network. Michigan State University - Applied Spatial Ecology and Technical Services Laboratory.  
This record is available online at <https://www.misin.msu.edu/report/misin/submit/summary/printRecord.php?obs=reprint&id=212739>