



Presence Observation

Curly pondweed

Potamogeton crispus



Record ID: 212747

Observer: Jennifer Johnson

Source: Michigan Department of Environmental Quality

Latitude: 44.02062

Longitude: -82.99066

Area: Individual/Few/Several

Density: Sparse

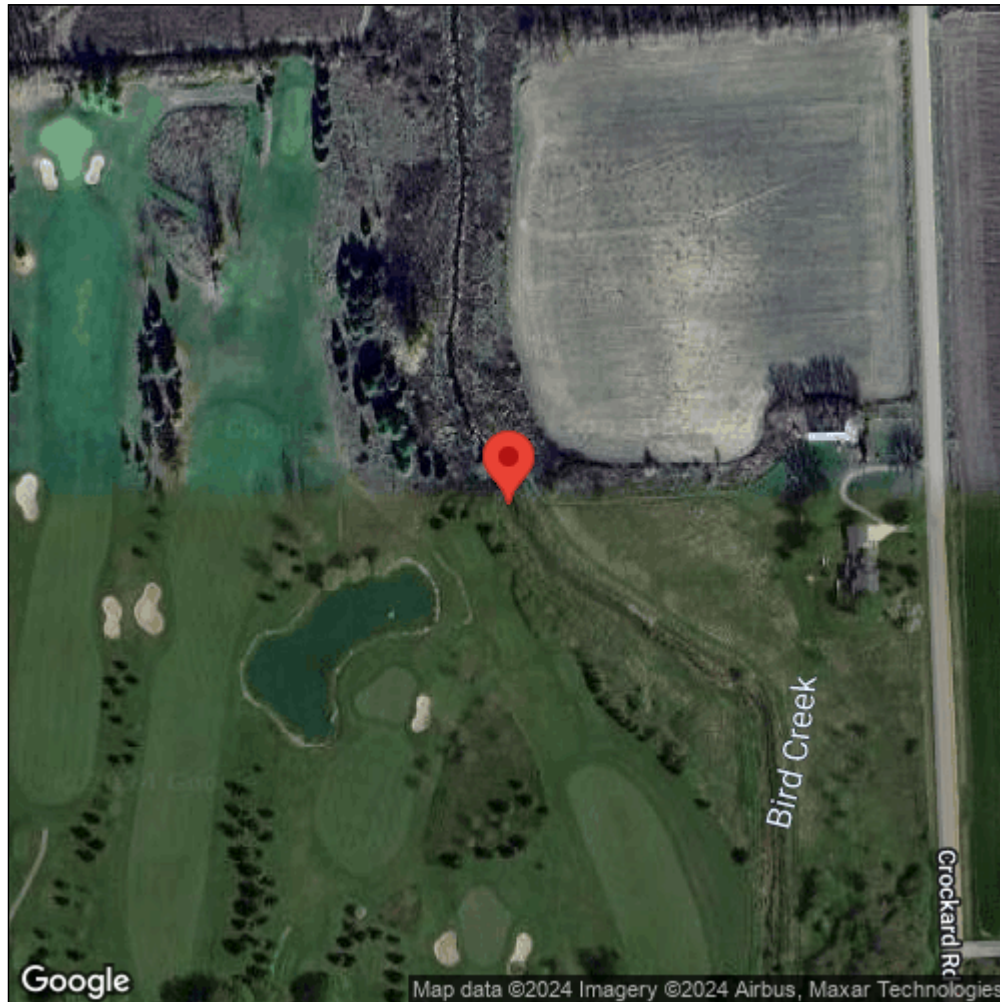
Observation Date: July 24, 2013

Date Entered: September 23, 2013

Comments: Site ID: MILS-1061 - Bird Creek.



Midwest Invasive Species
Information Network



Source: MISIN. 2024. Midwest Invasive Species Information Network. Michigan State University - Applied Spatial Ecology and Technical Services Laboratory. This record is available online at <https://www.misin.msu.edu/report/misin/submit/summary/printRecord.php?obs=reprint&id=212747>