



## Presence Observation

### Reed canarygrass

*Phalaris arundinacea*



**Record ID:** 212757

**Observer:** Jennifer Johnson

**Source:** Michigan Department of Environmental Quality

**Latitude:** 45.84948

**Longitude:** -87.11052

**Area:** Individual/Few/Several

**Density:** Sparse

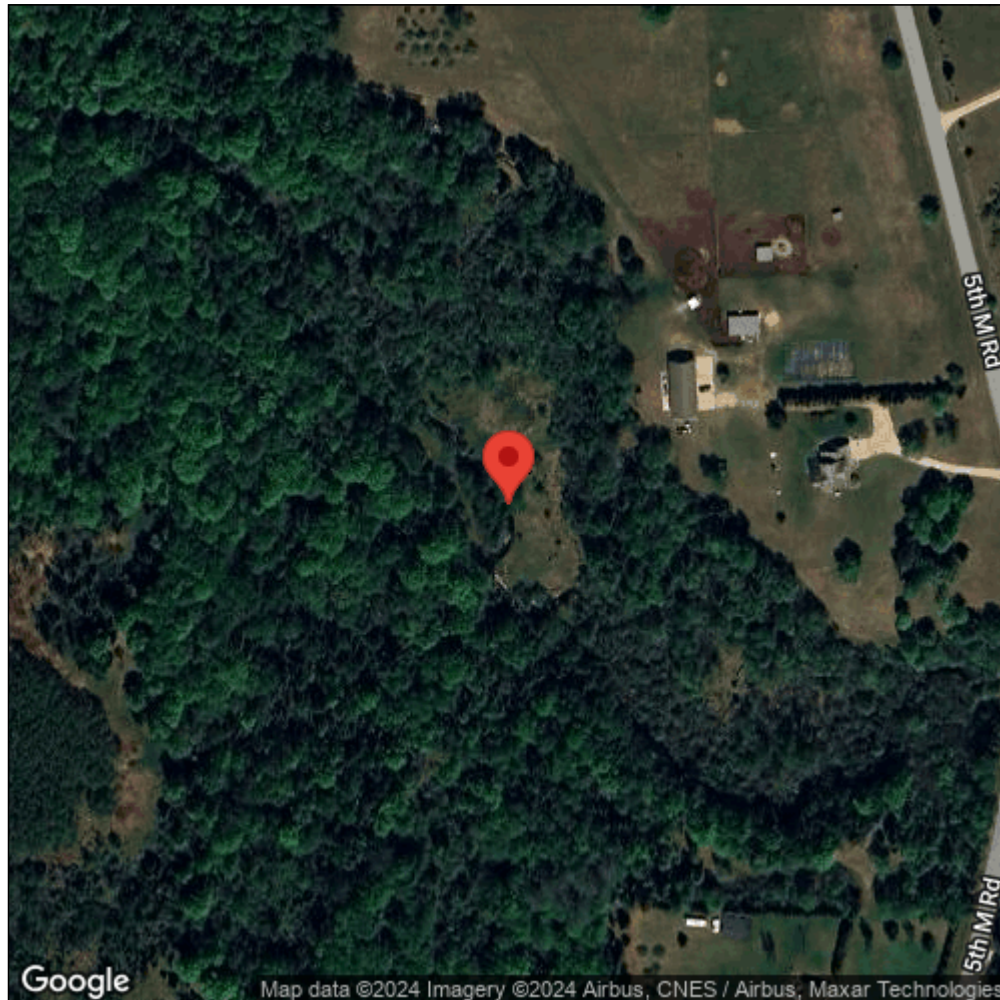
**Observation Date:** August 22, 2013

**Date Entered:** September 23, 2013

**Comments:** Site ID: MISS-1137 - Reno Creek.



Midwest Invasive Species  
Information Network



Source: MISIN. 2024. Midwest Invasive Species Information Network. Michigan State University - Applied Spatial Ecology and Technical Services Laboratory. This record is available online at <https://www.misin.msu.edu/report/misin/submit/summary/printRecord.php?obs=reprint&id=212757>