



Midwest Invasive Species  
Information Network

## Presence Observation

### Reed canarygrass

*Phalaris arundinacea*



**Record ID:** 213875

**Observer:** Mari Dallapiazza

**Source:** Wild Rivers Invasive Species Coalition

**Latitude:** 46.005716

**Longitude:** -88.611168

**Area:** 1/2 acre to 1 acre

**Density:** Monoculture

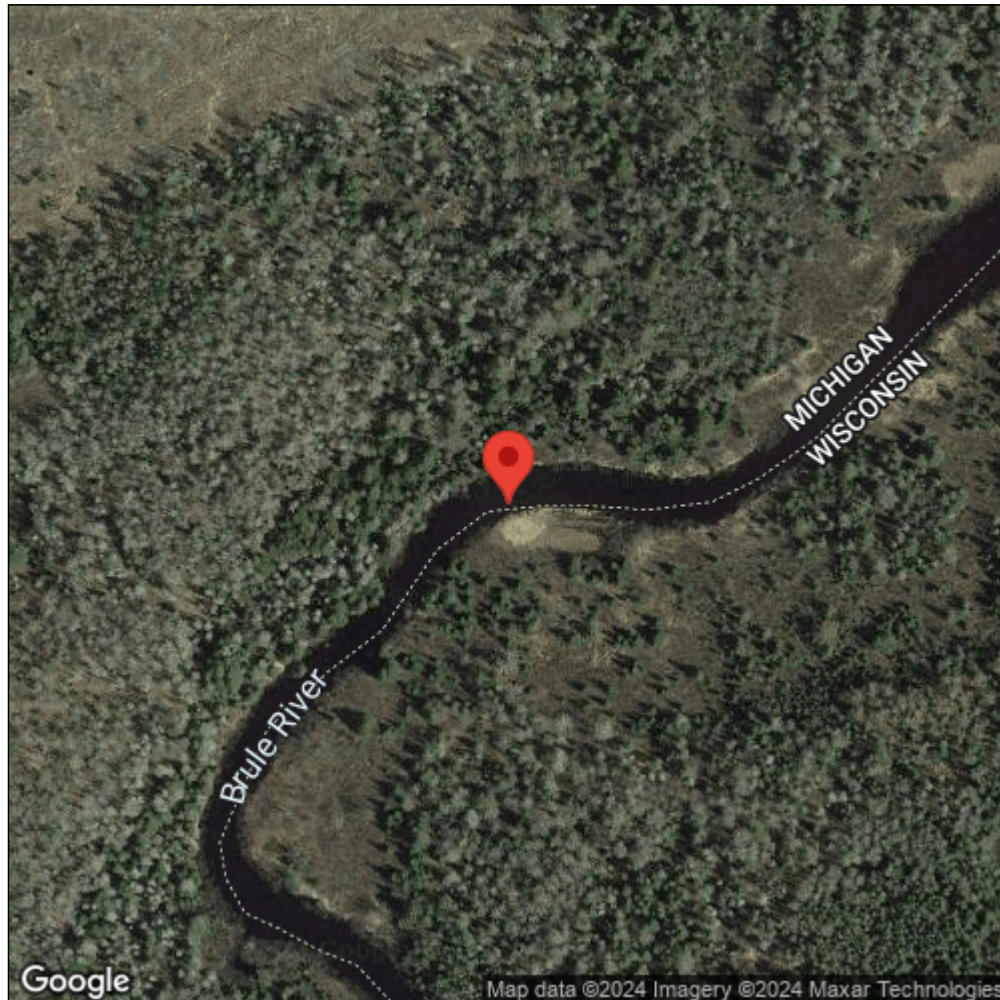
**Observation Date:** August 8, 2013

**Date Entered:** October 4, 2013

**Comments:**



Midwest Invasive Species  
Information Network



Source: MISIN. 2024. Midwest Invasive Species Information Network. Michigan State University - Applied Spatial Ecology and Technical Services Laboratory. This record is available online at <https://www.misin.msu.edu/report/misin/submit/summary/printRecord.php?obs=reprint&id=213875>