



Midwest Invasive Species
Information Network

Presence Observation

Reed canarygrass

Phalaris arundinacea



Record ID: 213876

Observer: Mari Dallapiazza

Source: Wild Rivers Invasive Species Coalition

Latitude: 46.006554

Longitude: -88.608692

Area: 1000 sq ft to 1/2 acre

Density: Dense

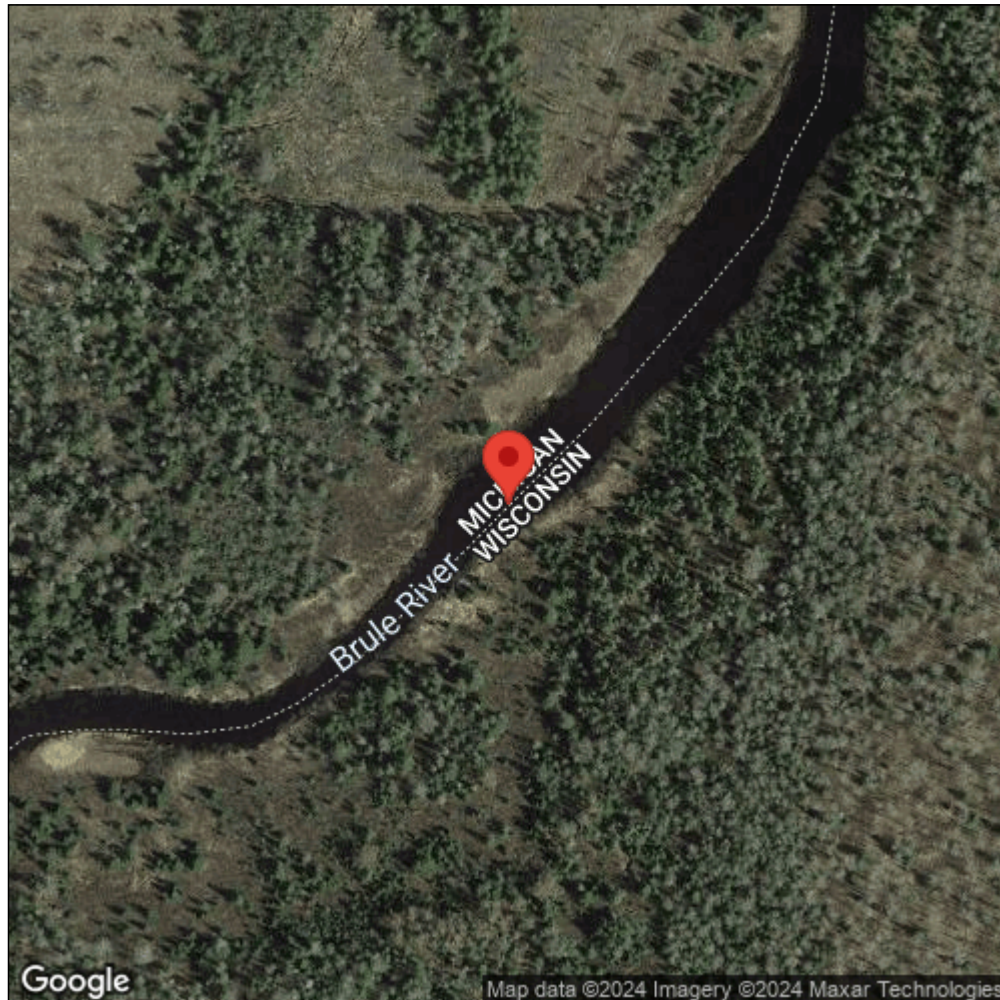
Observation Date: August 8, 2013

Date Entered: October 4, 2013

Comments:



Midwest Invasive Species
Information Network



Source: MISIN. 2024. Midwest Invasive Species Information Network. Michigan State University - Applied Spatial Ecology and Technical Services Laboratory. This record is available online at <https://www.misin.msu.edu/report/misin/submit/summary/printRecord.php?obs=reprint&id=213876>