



Midwest Invasive Species
Information Network

Presence Observation

Reed canarygrass

Phalaris arundinacea



Record ID: 213922

Observer: Mari Dallapiazza

Source: Wild Rivers Invasive Species Coalition

Latitude: 45.989741

Longitude: -88.449026

Area: 1/2 acre to 1 acre

Density: Dense

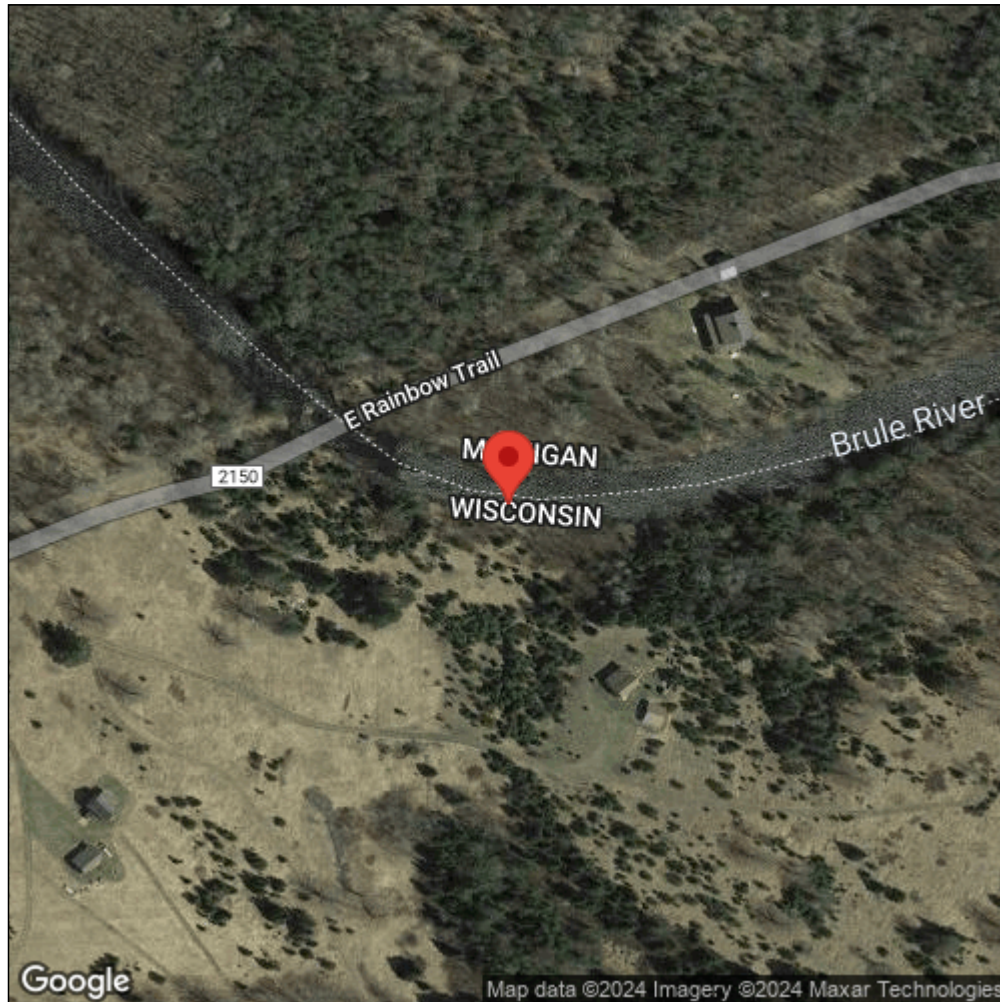
Observation Date: July 12, 2013

Date Entered: October 4, 2013

Comments:



Midwest Invasive Species
Information Network



Source: MISIN. 2024. Midwest Invasive Species Information Network. Michigan State University - Applied Spatial Ecology and Technical Services Laboratory. This record is available online at <https://www.misin.msu.edu/report/misin/submit/summary/printRecord.php?obs=reprint&id=213922>