



Midwest Invasive Species  
Information Network

## Presence Observation

### Reed canarygrass

*Phalaris arundinacea*



**Record ID:** 213961

**Observer:** Mari Dallapiazza

**Source:** Wild Rivers Invasive Species Coalition

**Latitude:** 45.978655

**Longitude:** -88.353904

**Area:** 1000 sq ft to 1/2 acre

**Density:** Monoculture

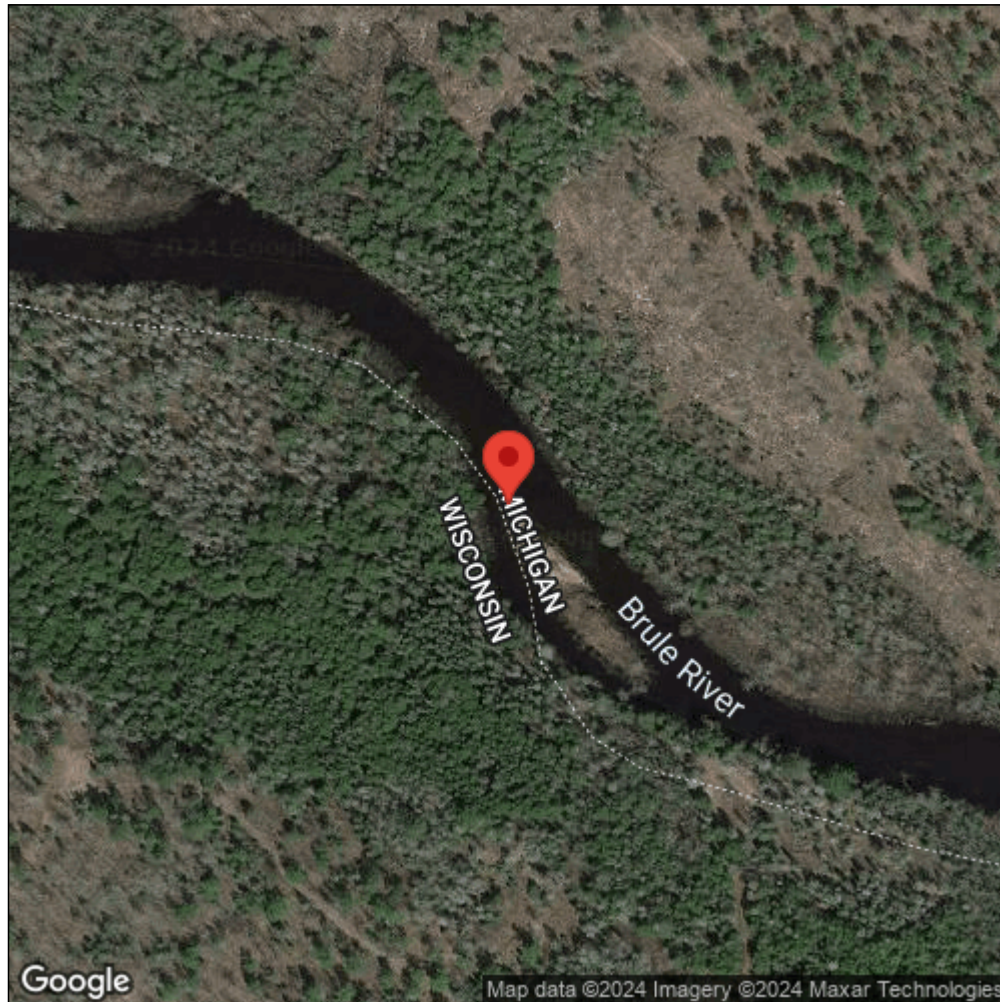
**Observation Date:** July 12, 2013

**Date Entered:** October 4, 2013

**Comments:**



Midwest Invasive Species  
Information Network



Source: MISIN. 2024. Midwest Invasive Species Information Network. Michigan State University - Applied Spatial Ecology and Technical Services Laboratory. This record is available online at <https://www.misin.msu.edu/report/misin/submit/summary/printRecord.php?obs=reprint&id=213961>