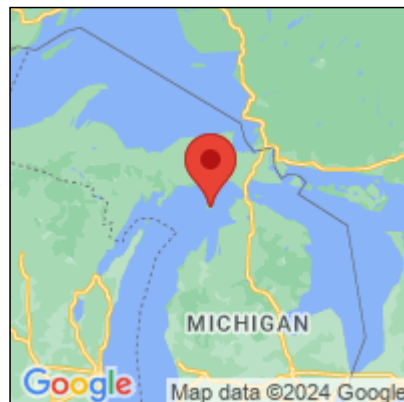




Presence Observation

Reed canarygrass

Phalaris arundinacea



Record ID: 22477

Observer: Michigan Dune Alliance

Source: The Nature Conservancy of Michigan

Latitude: 45.60620117

Longitude: -85.50019836

Area: 1000 sq ft to 1/2 acre

Density: Dense

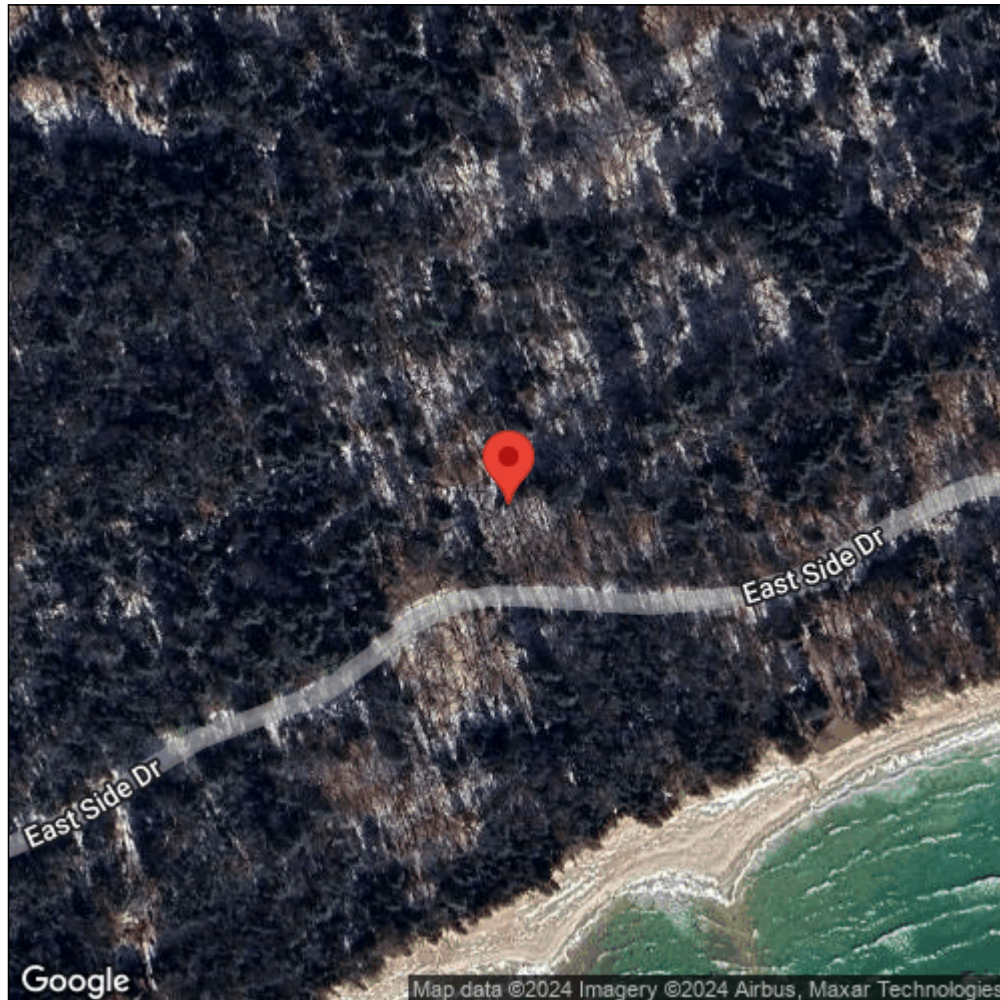
Observation Date: July 19, 2012

Date Entered: January 25, 2013

Comments: Waypoint: BIJHRC072 - Status: U = Untreated.



Midwest Invasive Species
Information Network



Source: MISIN. 2024. Midwest Invasive Species Information Network. Michigan State University - Applied Spatial Ecology and Technical Services Laboratory. This record is available online at <https://www.misin.msu.edu/report/misin/submit/summary/printRecord.php?obs=reprint&id=22477>