



Midwest Invasive Species  
Information Network

## Presence Observation

### Narrow-leaved cat-tail

*Typha angustifolia*



**Record ID:** 22740

**Observer:** Michigan Dune Alliance

**Source:** The Nature Conservancy of Michigan

**Latitude:** 45.7405014

**Longitude:** -85.521698

**Area:** less than 1000 sq ft

**Density:** Dense

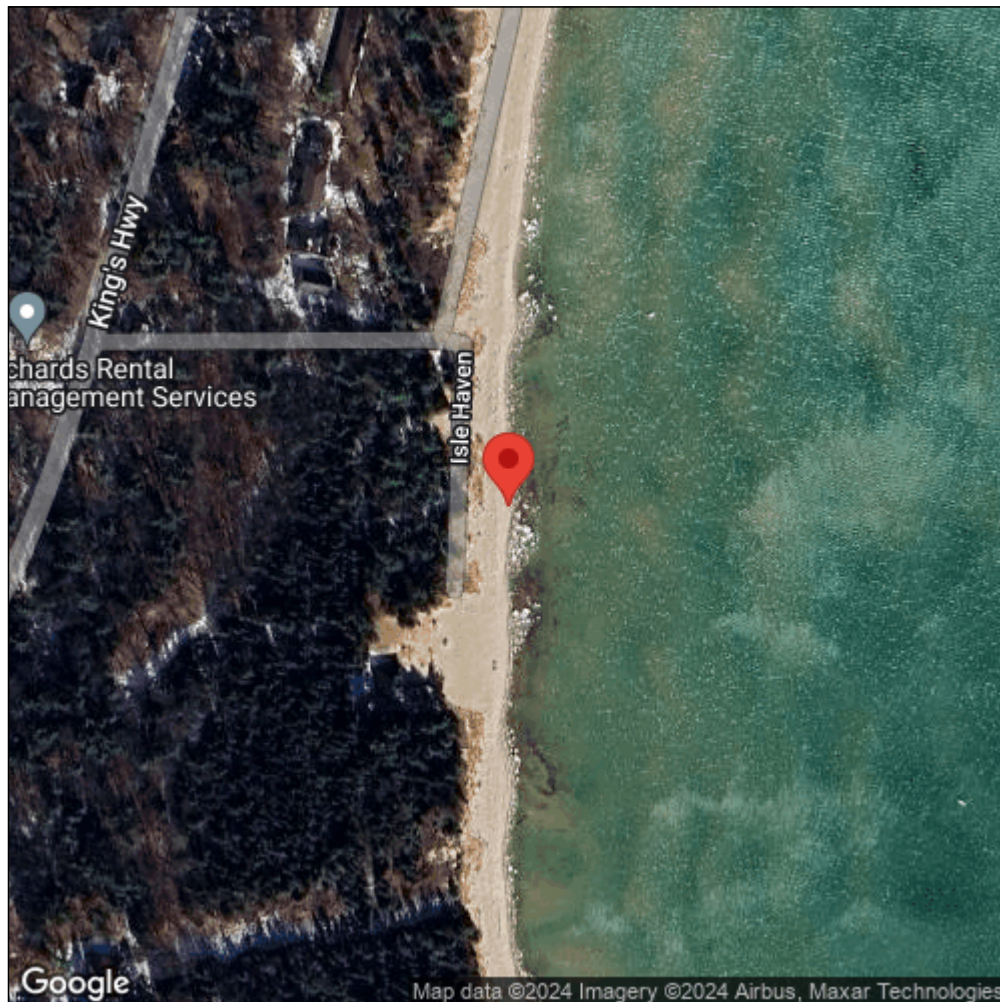
**Observation Date:** June 28, 2012

**Date Entered:** January 25, 2013

**Comments:** Waypoint: BILVCT007 - Status: D = Don't Know.



Midwest Invasive Species  
Information Network



Source: MISIN. 2024. Midwest Invasive Species Information Network. Michigan State University - Applied Spatial Ecology and Technical Services Laboratory. This record is available online at <https://www.misin.msu.edu/report/misin/submit/summary/printRecord.php?obs=reprint&id=22740>