



Presence Observation

Reed canarygrass

Phalaris arundinacea



Record ID: 2758

Observer: Ian Shackleford

Source: Ottawa National Forest

Latitude: 46.12698109

Longitude: -88.99696663

Area: Individual/Few/Several

Density: Not Reported

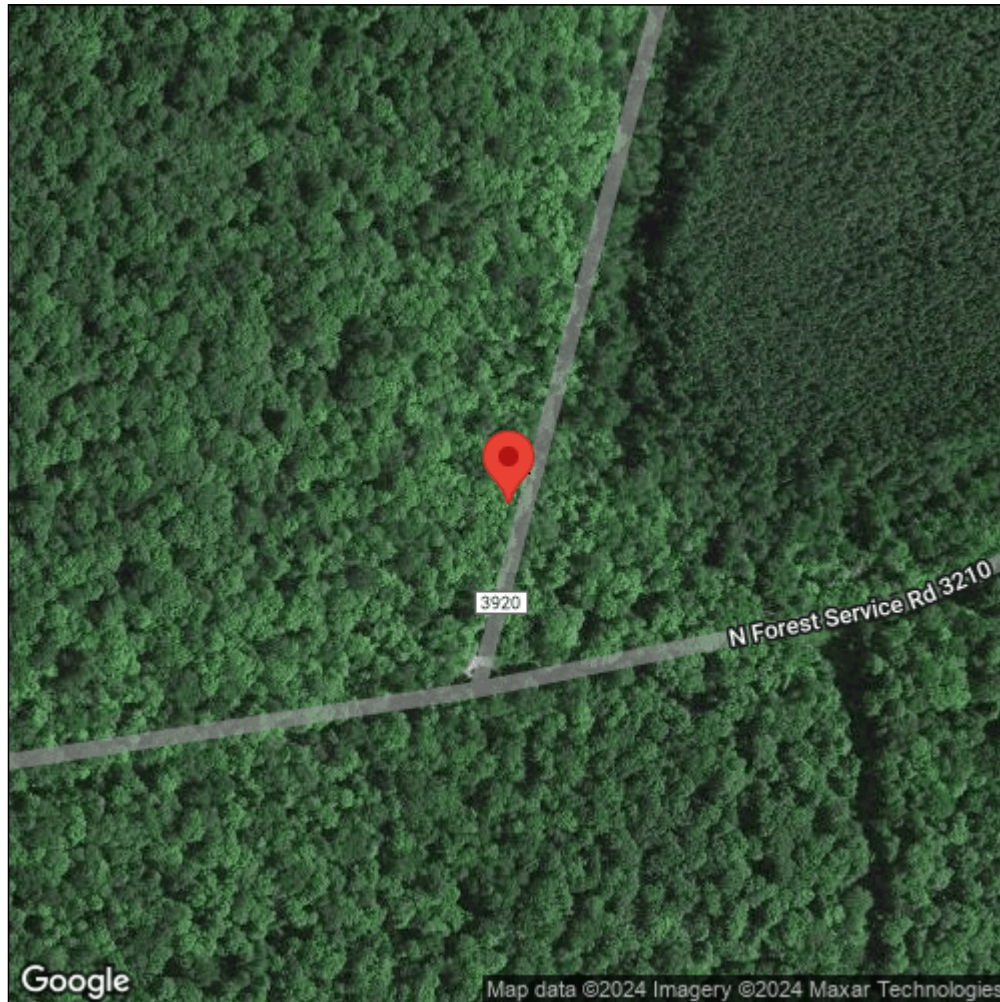
Observation Date: August 15, 2003

Date Entered: January 18, 2011

Comments: ONF Bulk load -- FR 3210/3920 intersection. Patches at FR 3920 / 3210 intersection.



Midwest Invasive Species
Information Network



Source: MISIN. 2024. Midwest Invasive Species Information Network. Michigan State University - Applied Spatial Ecology and Technical Services Laboratory. This record is available online at <https://www.misin.msu.edu/report/misin/submit/summary/printRecord.php?obs=reprint&id=2758>