



Presence Observation

Reed canarygrass

Phalaris arundinacea



Record ID: 412578

Observer: Lindsay Peterson

Source: WI DNR

Latitude: 45.897971

Longitude: -88.459564

Area: 1000 sq ft to 1/2 acre

Density: Patchy

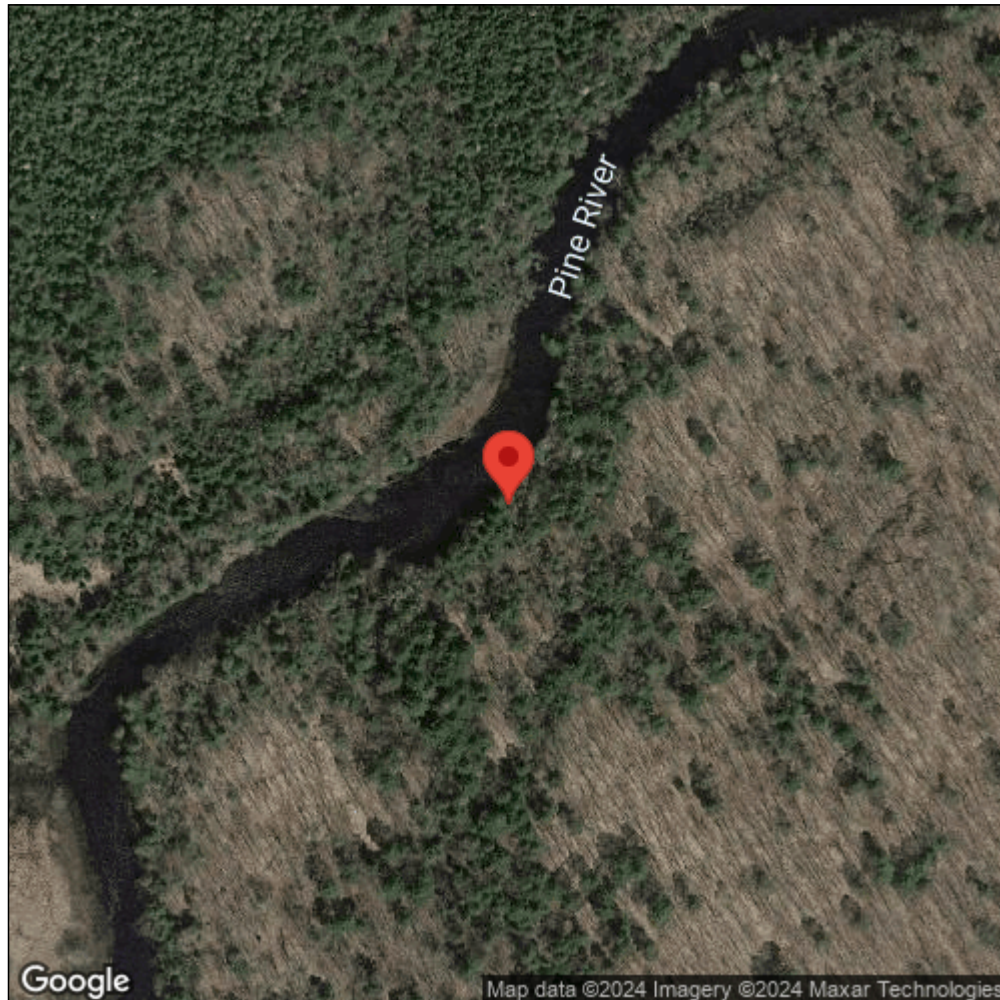
Observation Date: June 1, 2009

Date Entered: November 26, 2013

Comments: Original observer(s): Maureen Ferry and Teresa Pearson - After snake tail rapids on the south side of the Pine River.



Midwest Invasive Species
Information Network



Source: MISIN. 2024. Midwest Invasive Species Information Network. Michigan State University - Applied Spatial Ecology and Technical Services Laboratory. This record is available online at <https://www.misin.msu.edu/report/misin/submit/summary/printRecord.php?obs=reprint&id=412578>