



Presence Observation

Reed canarygrass

Phalaris arundinacea



Record ID: 412592

Observer: Lindsay Peterson

Source: WI DNR

Latitude: 45.89646

Longitude: -88.3813

Area: 1/2 acre to 1 acre

Density: Monoculture

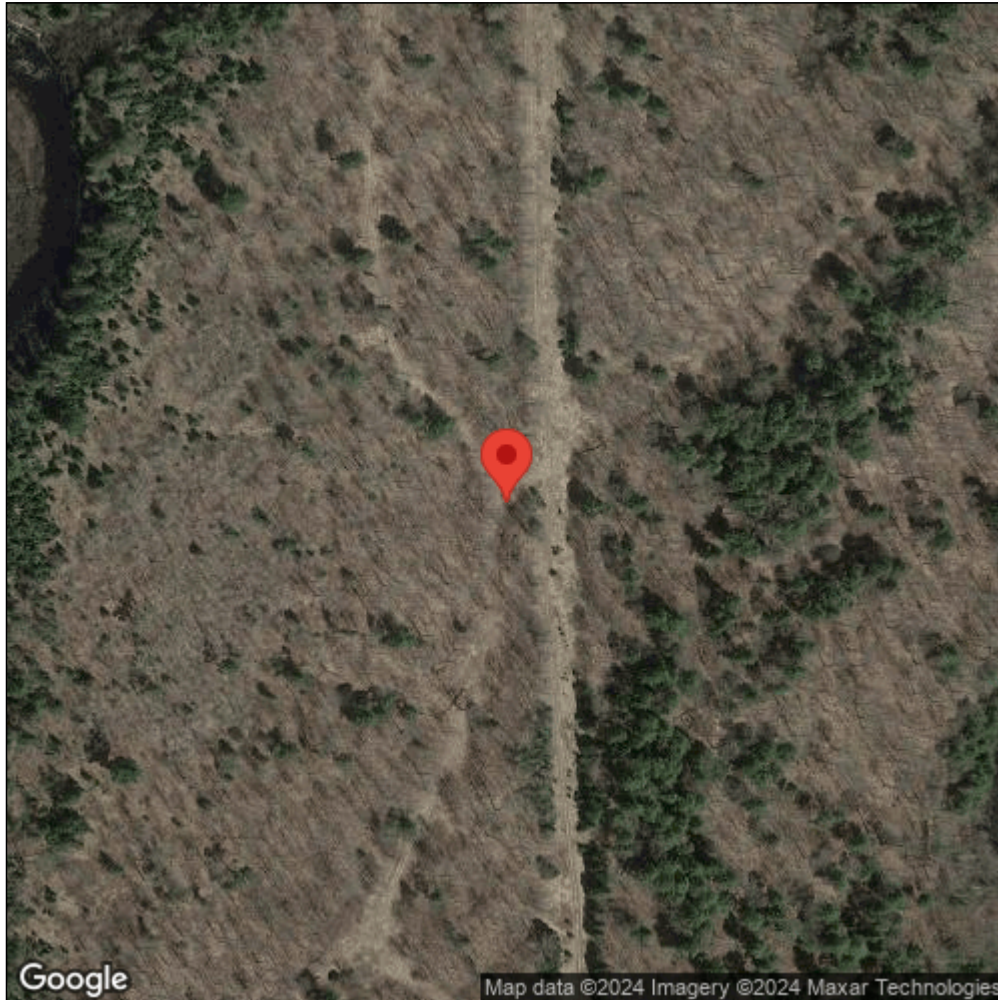
Observation Date: June 1, 2009

Date Entered: November 26, 2013

Comments: Original observer(s): Maureen Ferry and Teresa Pearson - On logging roads between Hwy 70 and Pine River surrounding the pipeline.



Midwest Invasive Species
Information Network



Source: MISIN. 2024. Midwest Invasive Species Information Network. Michigan State University - Applied Spatial Ecology and Technical Services Laboratory. This record is available online at <https://www.misin.msu.edu/report/misin/submit/summary/printRecord.php?obs=reprint&id=412592>