

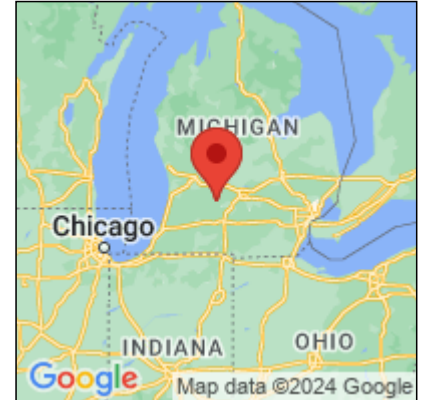


Midwest Invasive Species  
Information Network

## Presence Observation

### Reed canarygrass

*Phalaris arundinacea*



**Record ID:** 457046

**Observer:** Matt Schultz

**Source:** MISIN

**Latitude:** 42.6324

**Longitude:** -85.1661

**Area:** 1000 sq ft to 1/2 acre

**Density:** Patchy

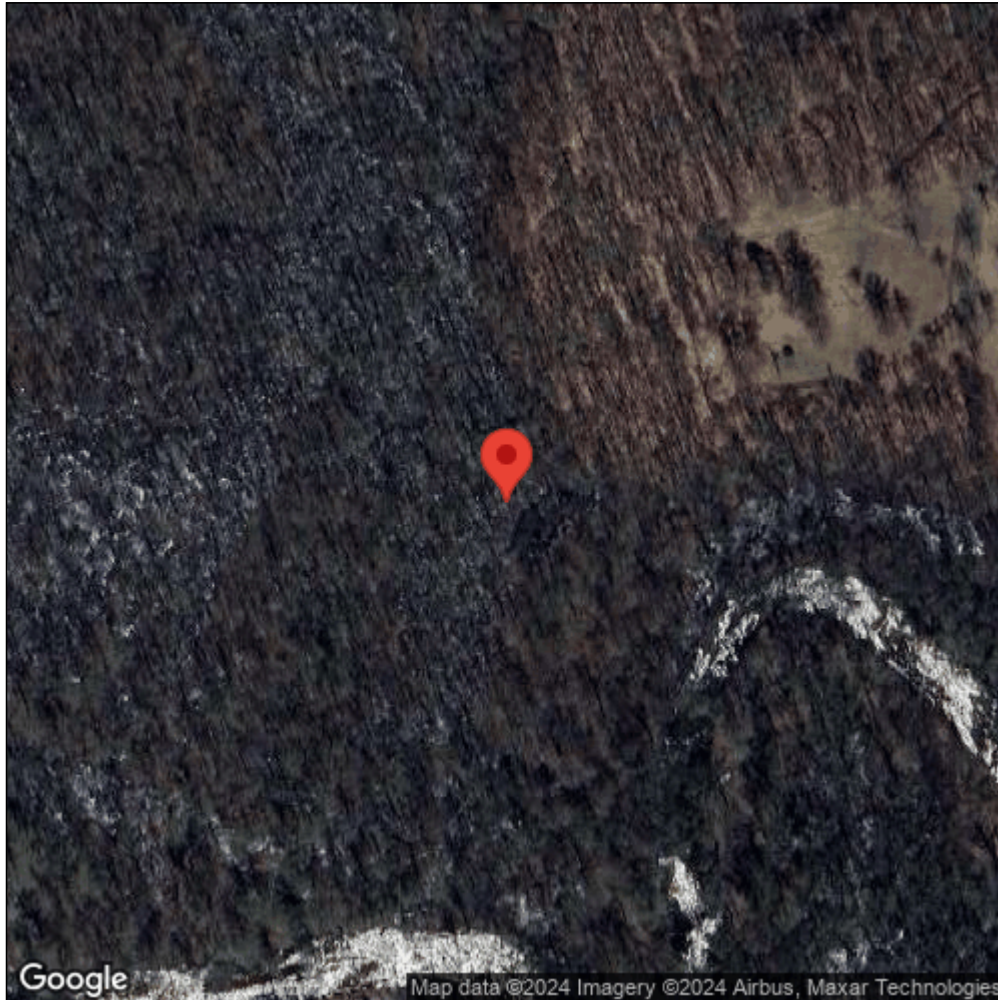
**Observation Date:** April 17, 2014

**Date Entered:** April 17, 2014

**Comments:** from Android; gps accuracy: 20meters



Midwest Invasive Species  
Information Network



Source: MISIN. 2024. Midwest Invasive Species Information Network. Michigan State University - Applied Spatial Ecology and Technical Services Laboratory. This record is available online at <https://www.misin.msu.edu/report/misin/submit/summary/printRecord.php?obs=reprint&id=457046>