



Midwest Invasive Species
Information Network

Presence Observation

Reed canarygrass

Phalaris arundinacea



Record ID: 457798

Observer: Fields Ratliff

Source: Northwest Michigan Invasive Species Network

Latitude: 44.25819486

Longitude: -86.24641076

Area: greater than 1 acre

Density: Sparse

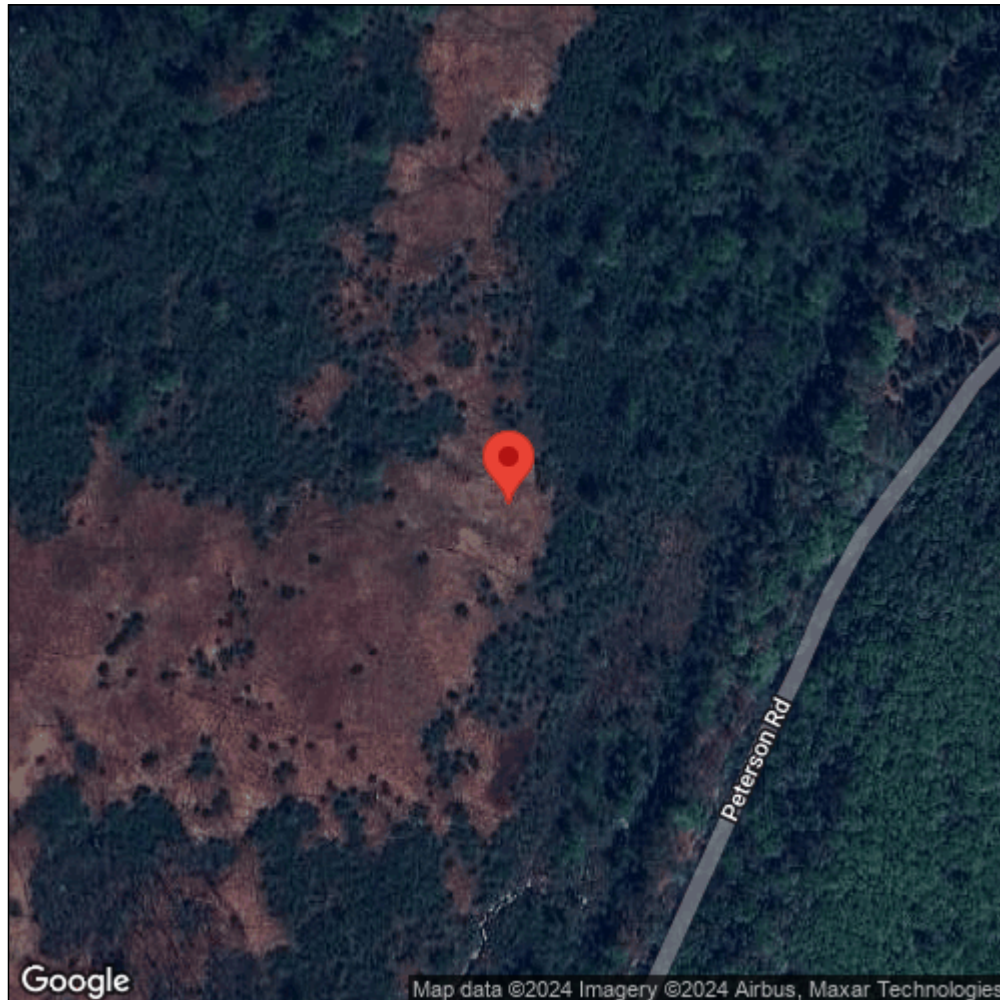
Observation Date: July 15, 2013

Date Entered: May 5, 2014

Comments: MCFRRC00251U - Manistee_2013_PointsMerge1 - Waypoint: 004 -
Altitude: 219.06



Midwest Invasive Species
Information Network



Source: MISIN. 2024. Midwest Invasive Species Information Network. Michigan State University - Applied Spatial Ecology and Technical Services Laboratory. This record is available online at <https://www.misin.msu.edu/report/misin/submit/summary/printRecord.php?obs=reprint&id=457798>