



Midwest Invasive Species  
Information Network

## Presence Observation

### Reed canarygrass

*Phalaris arundinacea*



**Record ID:** 457895

**Observer:** Fields Ratliff

**Source:** Northwest Michigan Invasive Species Network

**Latitude:** 44.25864992

**Longitude:** -86.28943641

**Area:** greater than 1 acre

**Density:** Sparse

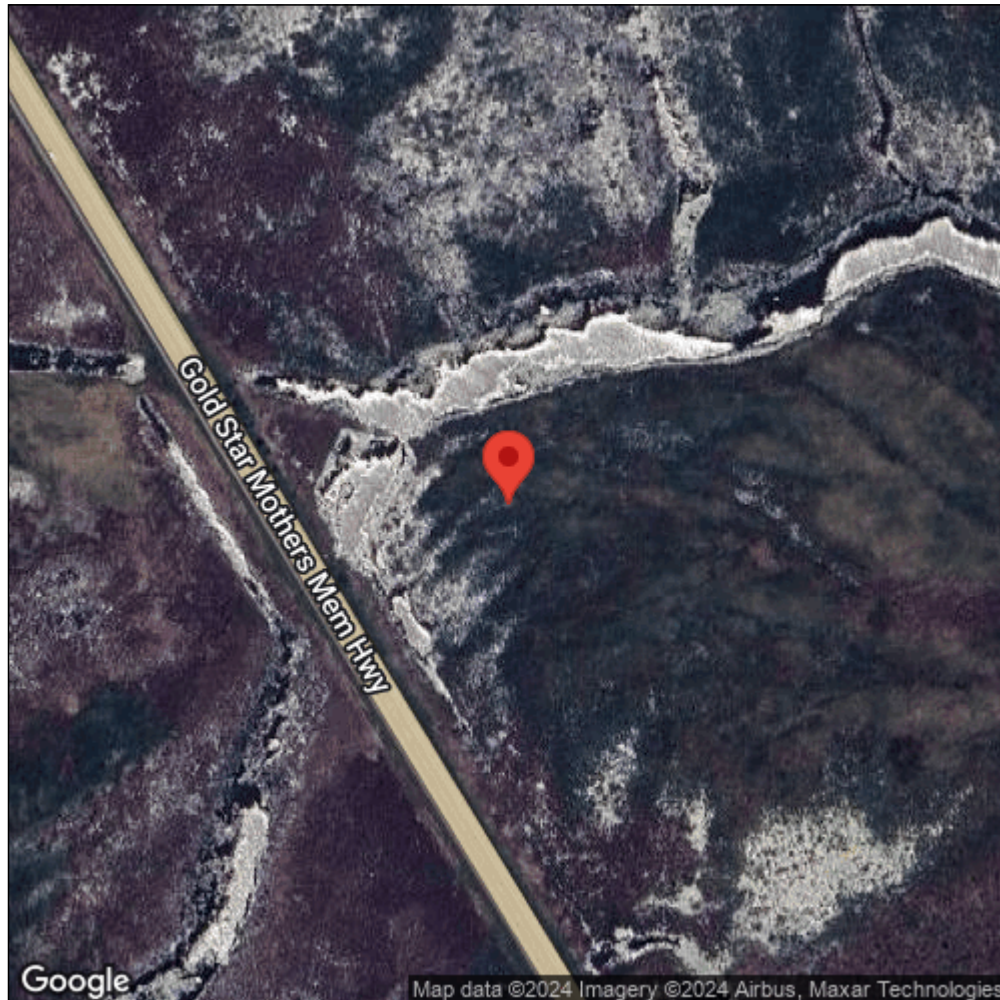
**Observation Date:** July 18, 2013

**Date Entered:** May 5, 2014

**Comments:** MCFRRC00951U - MRSGA\_SurveyPoints\_7-18-13FR - Waypoint: 034,100 - Altitude: 187.34



Midwest Invasive Species  
Information Network



Source: MISIN. 2024. Midwest Invasive Species Information Network. Michigan State University - Applied Spatial Ecology and Technical Services Laboratory. This record is available online at <https://www.misin.msu.edu/report/misin/submit/summary/printRecord.php?obs=reprint&id=457895>