



## Presence Observation

### Reed canarygrass

*Phalaris arundinacea*



**Record ID:** 464426

**Observer:** Dan Mitchell

**Source:** MISIN

**Latitude:** 44.3372

**Longitude:** -87.6151

**Area:** greater than 1 acre

**Density:** Dense

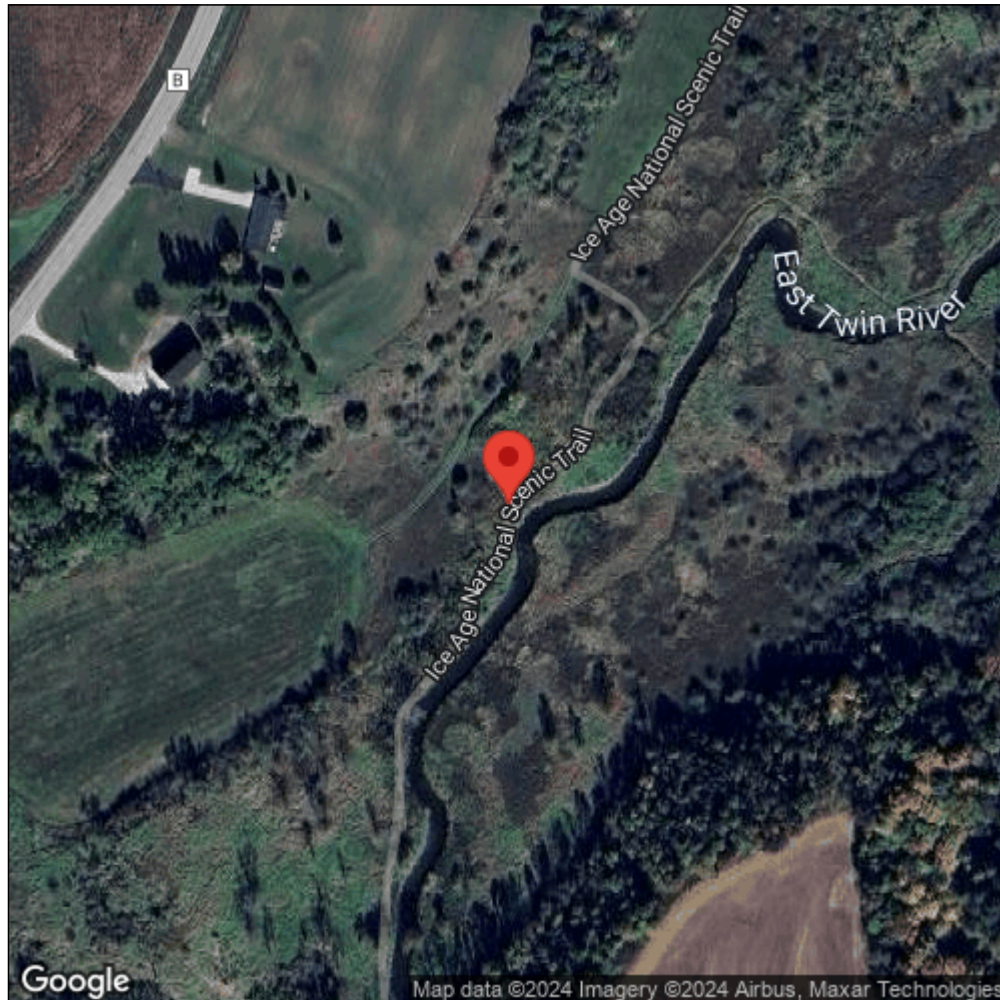
**Observation Date:** August 8, 2014

**Date Entered:** August 8, 2014

**Comments:** from iOS; gps accuracy: 10meters



Midwest Invasive Species  
Information Network



Source: MISIN. 2024. Midwest Invasive Species Information Network. Michigan State University - Applied Spatial Ecology and Technical Services Laboratory. This record is available online at <https://www.misin.msu.edu/report/misin/submit/summary/printRecord.php?obs=reprint&id=464426>