



## Presence Observation

### Curly pondweed

*Potamogeton crispus*



**Record ID:** 467074

**Observer:** Jennifer Johnson

**Source:** Michigan Department of Environmental Quality

**Latitude:** 41.85574

**Longitude:** -86.26981

**Area:** Not Reported

**Density:** Sparse

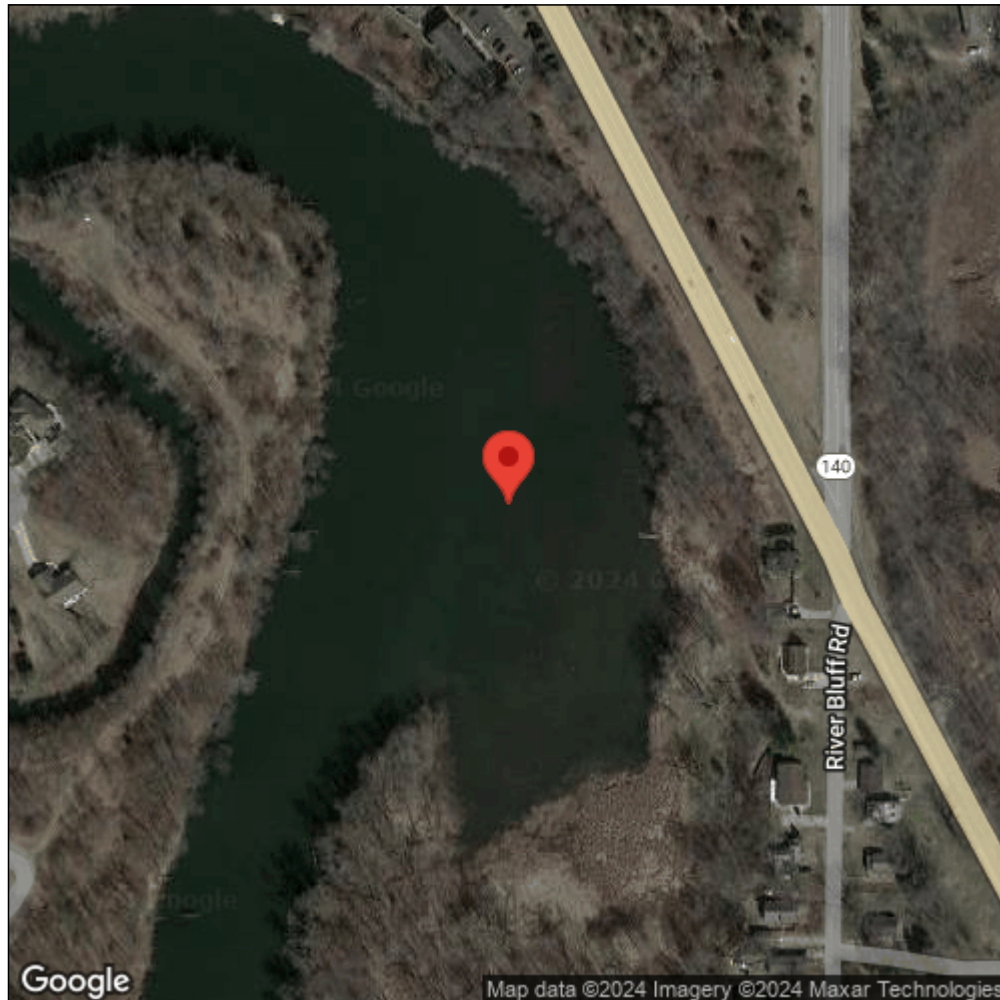
**Observation Date:** June 17, 2014

**Date Entered:** November 21, 2014

**Comments:** Waterbody: Saint Joseph River - Survey: NRSA 2014



Midwest Invasive Species  
Information Network



Source: MISIN. 2024. Midwest Invasive Species Information Network. Michigan State University - Applied Spatial Ecology and Technical Services Laboratory. This record is available online at <https://www.misin.msu.edu/report/misin/submit/summary/printRecord.php?obs=reprint&id=467074>