



## Presence Observation

### Purple loosestrife

*Lythrum salicaria*



**Record ID:** 467126

**Observer:** Jennifer Johnson

**Source:** Michigan Department of Environmental Quality

**Latitude:** 44.4263

**Longitude:** -83.91886

**Area:** Not Reported

**Density:** Sparse

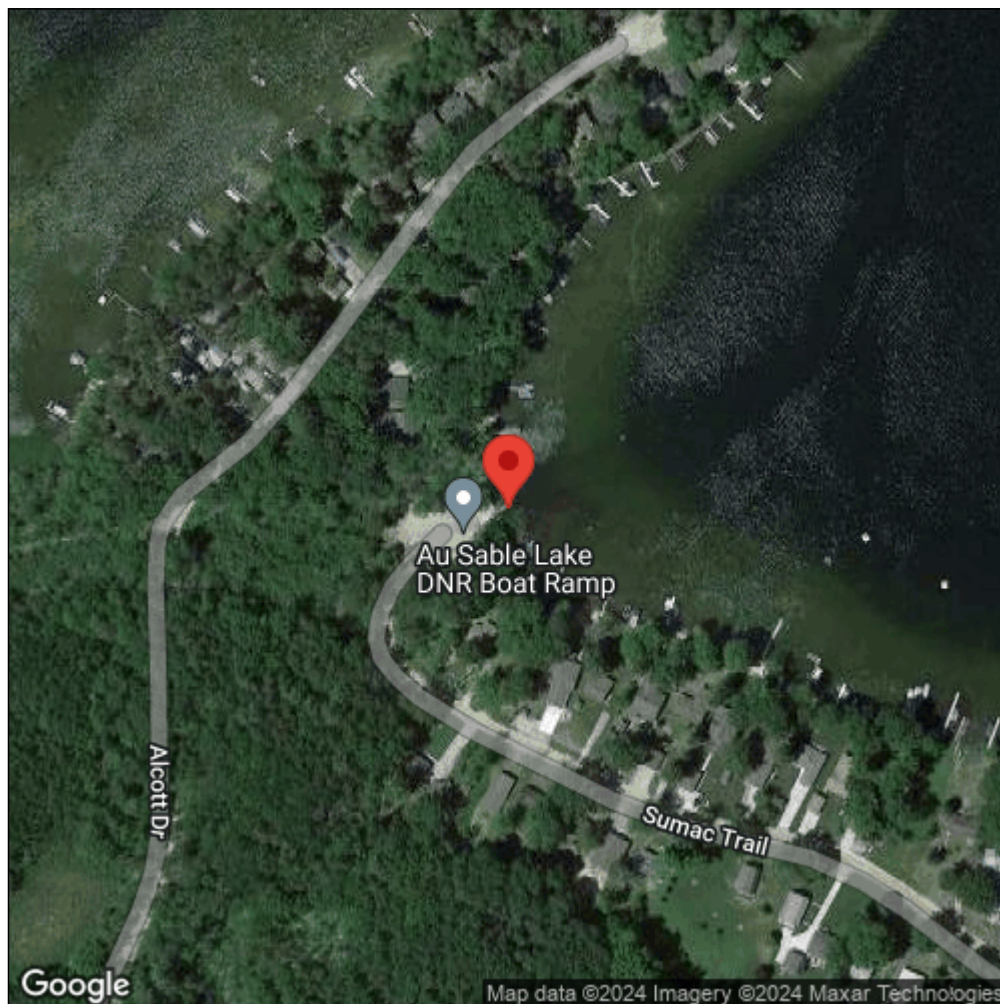
**Observation Date:** July 14, 2014

**Date Entered:** November 24, 2014

**Comments:** Water body: Ausable - Density: Sparse



Midwest Invasive Species  
Information Network



Source: MISIN. 2024. Midwest Invasive Species Information Network. Michigan State University - Applied Spatial Ecology and Technical Services Laboratory. This record is available online at <https://www.misin.msu.edu/report/misin/submit/summary/printRecord.php?obs=reprint&id=467126>