



Midwest Invasive Species
Information Network

Presence Observation

Curly pondweed

Potamogeton crispus



Record ID: 467225

Observer: Jennifer Johnson

Source: Michigan Department of Environmental Quality

Latitude: 43.07924

Longitude: -84.71953

Area: Not Reported

Density: Sparse

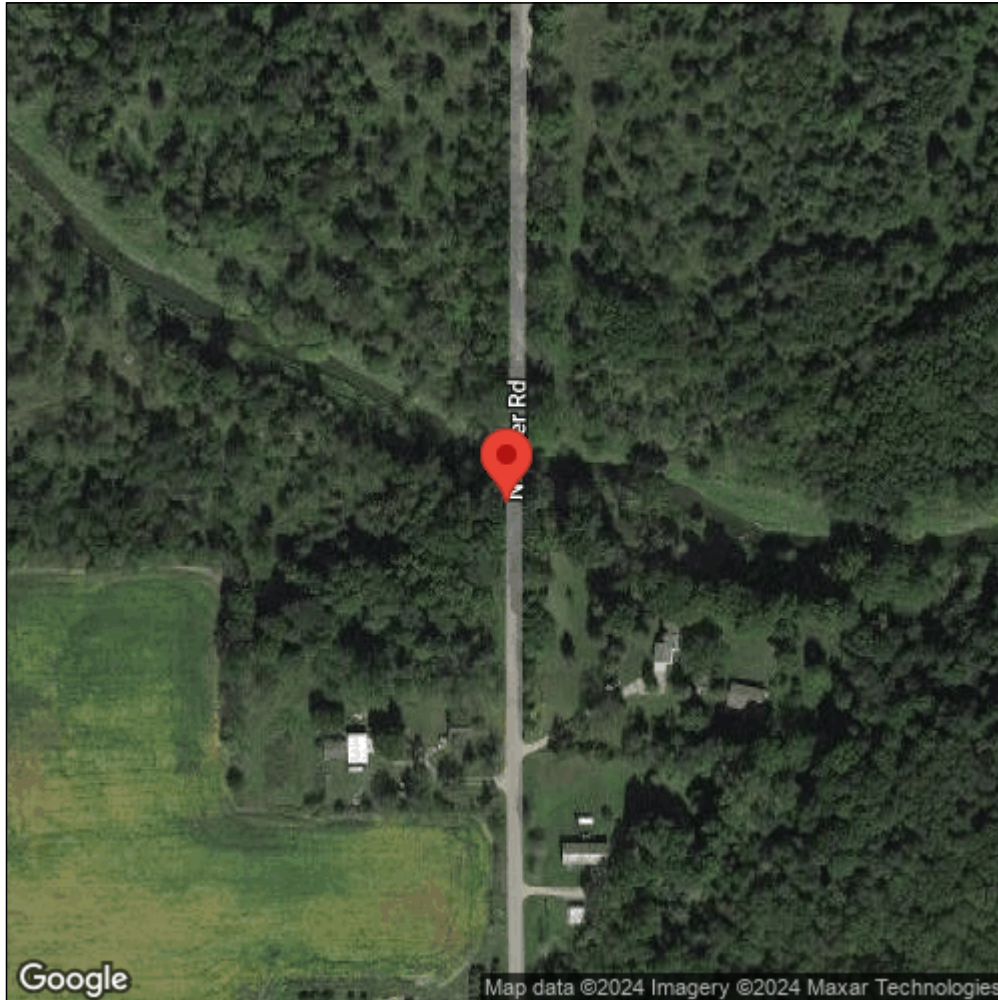
Observation Date: August 21, 2014

Date Entered: December 1, 2014

Comments: Waterbody: Hayworth Creek - Survey: P-51



Midwest Invasive Species
Information Network



Source: MISIN. 2024. Midwest Invasive Species Information Network. Michigan State University - Applied Spatial Ecology and Technical Services Laboratory. This record is available online at <https://www.misin.msu.edu/report/misin/submit/summary/printRecord.php?obs=reprint&id=467225>