



Presence Observation

Spiny waterflea

Bythotrephes longimanus



Record ID: 468365

Observer: Elizabeth Gulotty

Source: MISIN

Latitude: 44.8506978

Longitude: -83.5872996

Area: Not Reported

Density: Not Reported

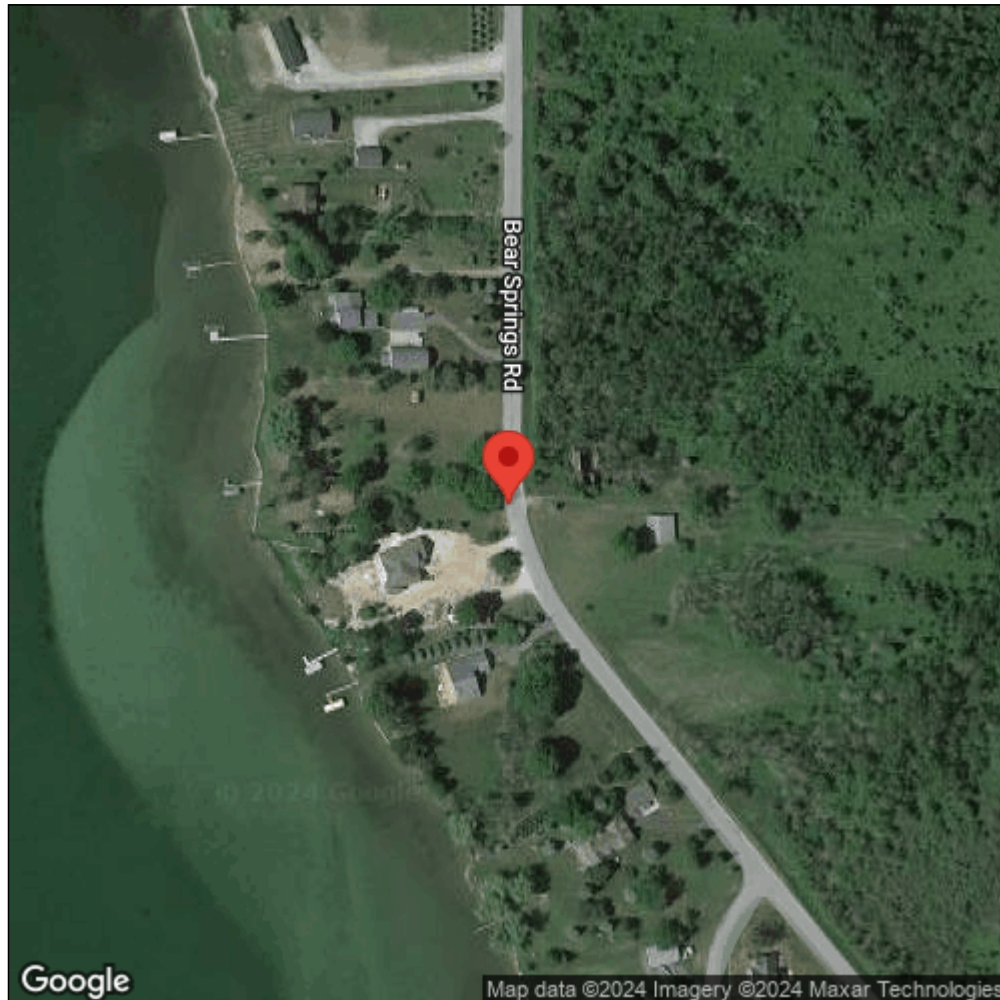
Observation Date: June 19, 2014

Date Entered: December 18, 2014

Comments: Found spiny waterflea in multiple zooplankton samples that are part of a MSU/DNR inland waterway yellow perch assessment. For more information: mccul121@msu.edu, gulotty@msu.edu



Midwest Invasive Species
Information Network



Source: MISIN. 2024. Midwest Invasive Species Information Network. Michigan State University - Applied Spatial Ecology and Technical Services Laboratory. This record is available online at <https://www.misin.msu.edu/report/misin/submit/summary/printRecord.php?obs=reprint&id=468365>