



Midwest Invasive Species
Information Network

Presence Observation

Narrow-leaved cat-tail

Typha angustifolia



Record ID: 468533

Observer: Sarah Green

Source: Grand Traverse Conservation District

Latitude: 44.63279234

Longitude: -86.14253375

Area: 1000 sq ft to 1/2 acre

Density: Dense

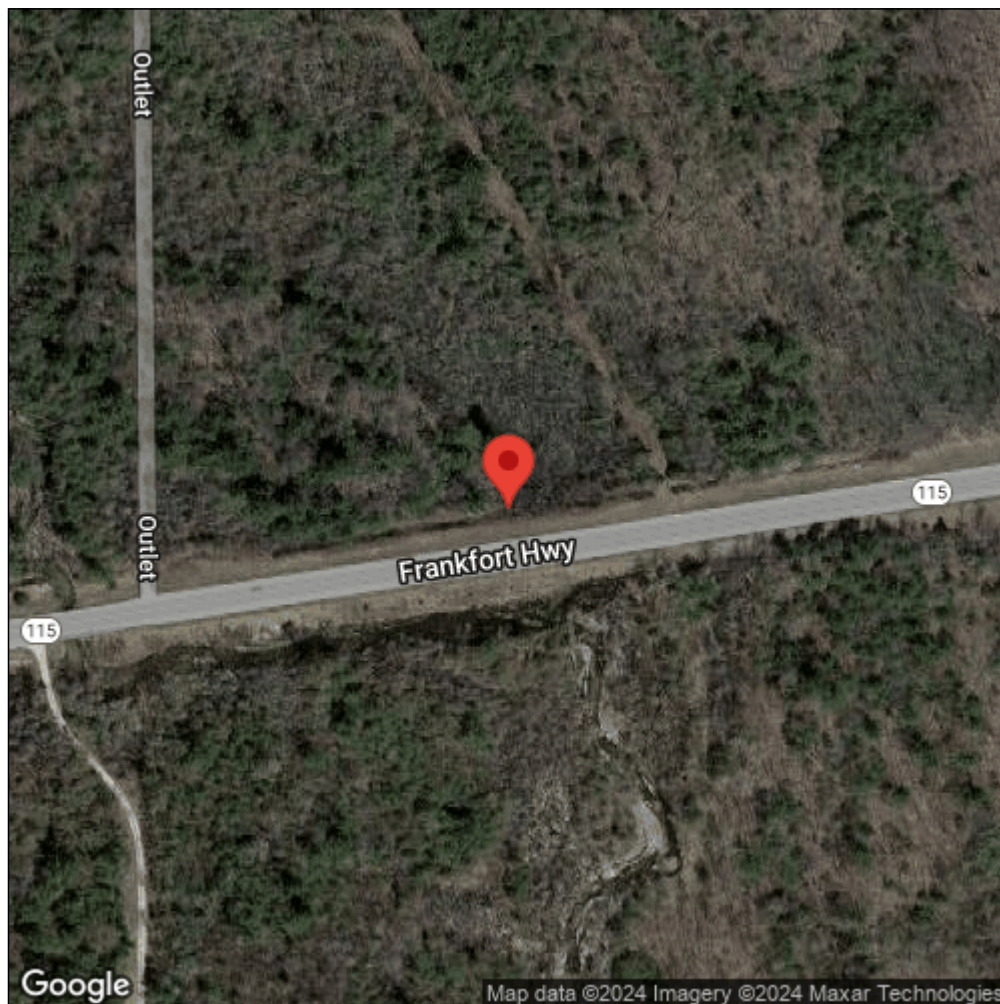
Observation Date: August 4, 2014

Date Entered: January 14, 2015

Comments: ID: BCSGNC02233U - Altitude: 185.42 - Site: Railroad Point - garmin GPSMap60CSX



Midwest Invasive Species
Information Network



Source: MISIN. 2024. Midwest Invasive Species Information Network. Michigan State University - Applied Spatial Ecology and Technical Services Laboratory. This record is available online at <https://www.misin.msu.edu/report/misin/submit/summary/printRecord.php?obs=reprint&id=468533>