



## Presence Observation

### Purple loosestrife

*Lythrum salicaria*



**Record ID:** 474780

**Observer:** Alicia Ihnken

**Source:** MI DNR Parks and Recreation Division

**Latitude:** 41.91801307

**Longitude:** -83.34876251

**Area:** less than 1000 sq ft

**Density:** Dense

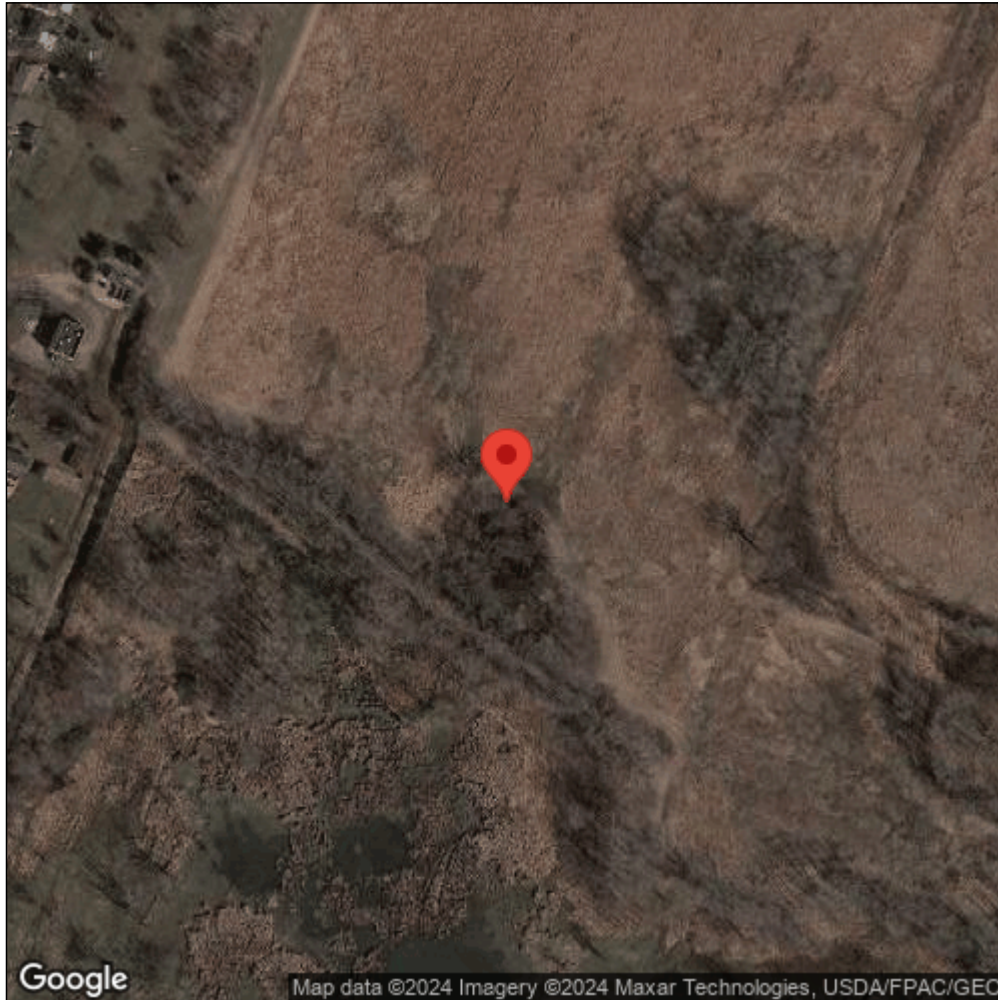
**Observation Date:** September 13, 2011

**Date Entered:** March 5, 2015

**Comments:** Original observer(s): PlantWise - STPW0090 - Sterling\_SP - Verified: YES



Midwest Invasive Species  
Information Network



Source: MISIN. 2024. Midwest Invasive Species Information Network. Michigan State University - Applied Spatial Ecology and Technical Services Laboratory. This record is available online at <https://www.misin.msu.edu/report/misin/submit/summary/printRecord.php?obs=reprint&id=474780>