



Presence Observation

Purple loosestrife

Lythrum salicaria



Record ID: 474802

Observer: Alicia Ihnken

Source: MI DNR Parks and Recreation Division

Latitude: 42.312713

Longitude: -84.223607

Area: less than 1000 sq ft

Density: Patchy

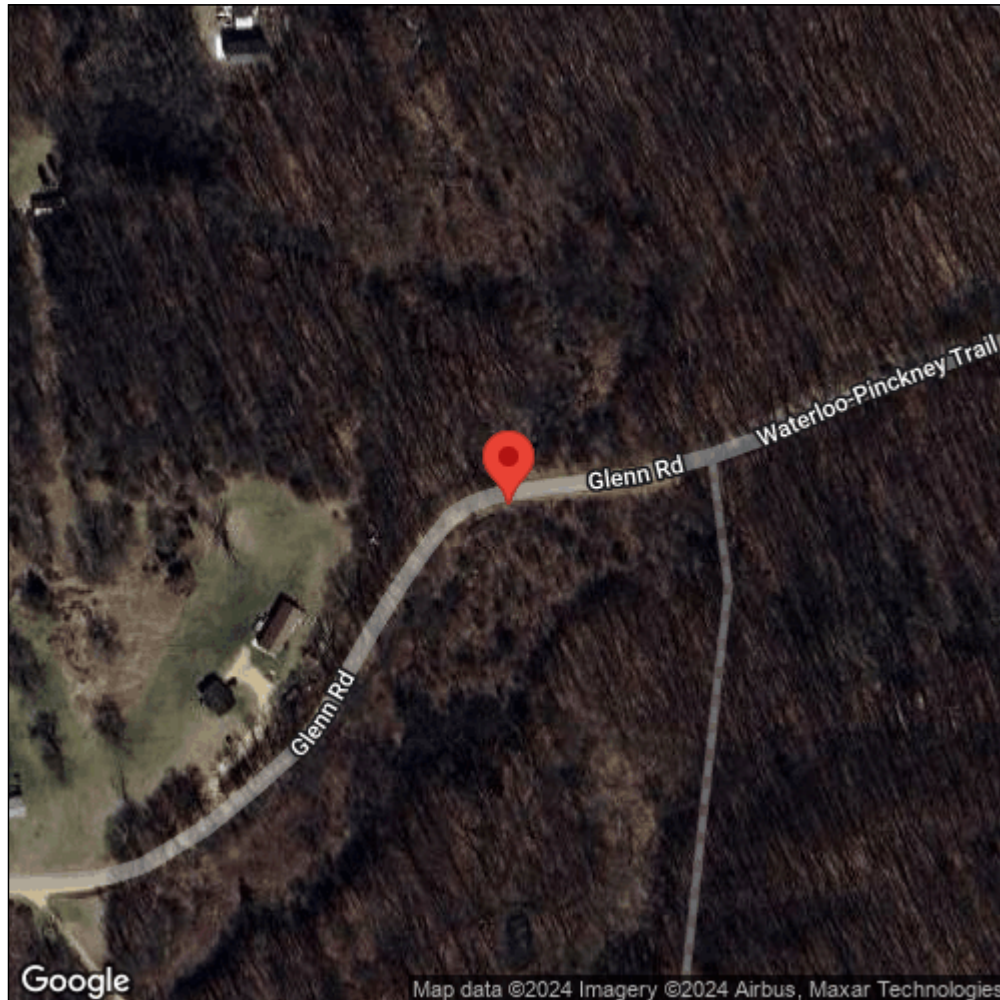
Observation Date: September 9, 2009

Date Entered: March 5, 2015

Comments: Original observer(s): Steve Seeger - WLSG0020 - Waterloo_RA - About a dozen plants clustered on both sides of the road just east of the private sections.



Midwest Invasive Species
Information Network



Source: MISIN. 2024. Midwest Invasive Species Information Network. Michigan State University - Applied Spatial Ecology and Technical Services Laboratory. This record is available online at <https://www.misin.msu.edu/report/misin/submit/summary/printRecord.php?obs=reprint&id=474802>