



## Presence Observation

### Reed canarygrass

*Phalaris arundinacea*



**Record ID:** 475104

**Observer:** Bob Clancy

**Source:** MI DNR Parks and Recreation Division

**Latitude:** 43.69735099

**Longitude:** -83.92955359

**Area:** 1000 sq ft to 1/2 acre

**Density:** Patchy

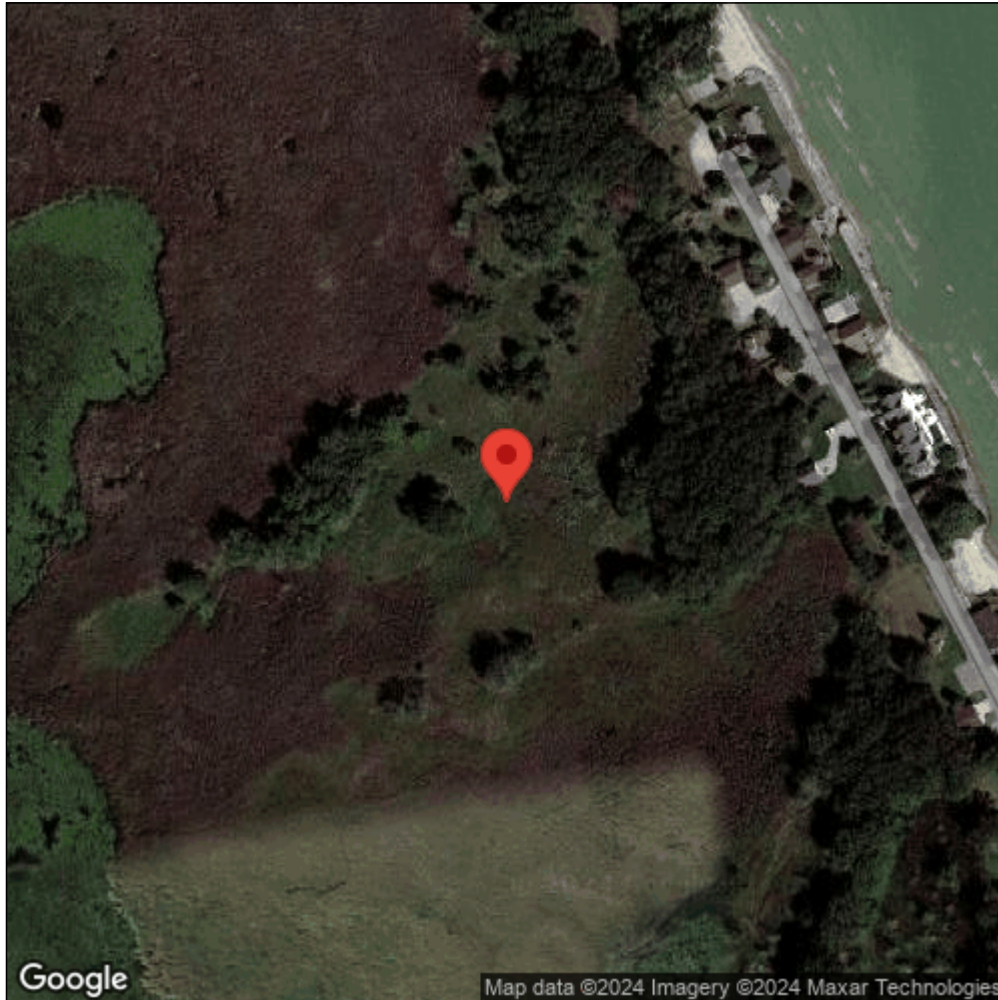
**Observation Date:** September 22, 2009

**Date Entered:** March 5, 2015

**Comments:** BCBC0002 - Bay\_City\_RA - Reed canary patch, to be treated in NAWCA contract - Verified: YES



Midwest Invasive Species  
Information Network



Source: MISIN. 2024. Midwest Invasive Species Information Network. Michigan State University - Applied Spatial Ecology and Technical Services Laboratory. This record is available online at <https://www.misin.msu.edu/report/misin/submit/summary/printRecord.php?obs=reprint&id=475104>