



Midwest Invasive Species
Information Network

Presence Observation

Reed canarygrass

Phalaris arundinacea



Record ID: 475120

Observer: Alicia Ihnken

Source: MI DNR Parks and Recreation Division

Latitude: 43.672438

Longitude: -83.911692

Area: Individual/Few/Several

Density: Dense

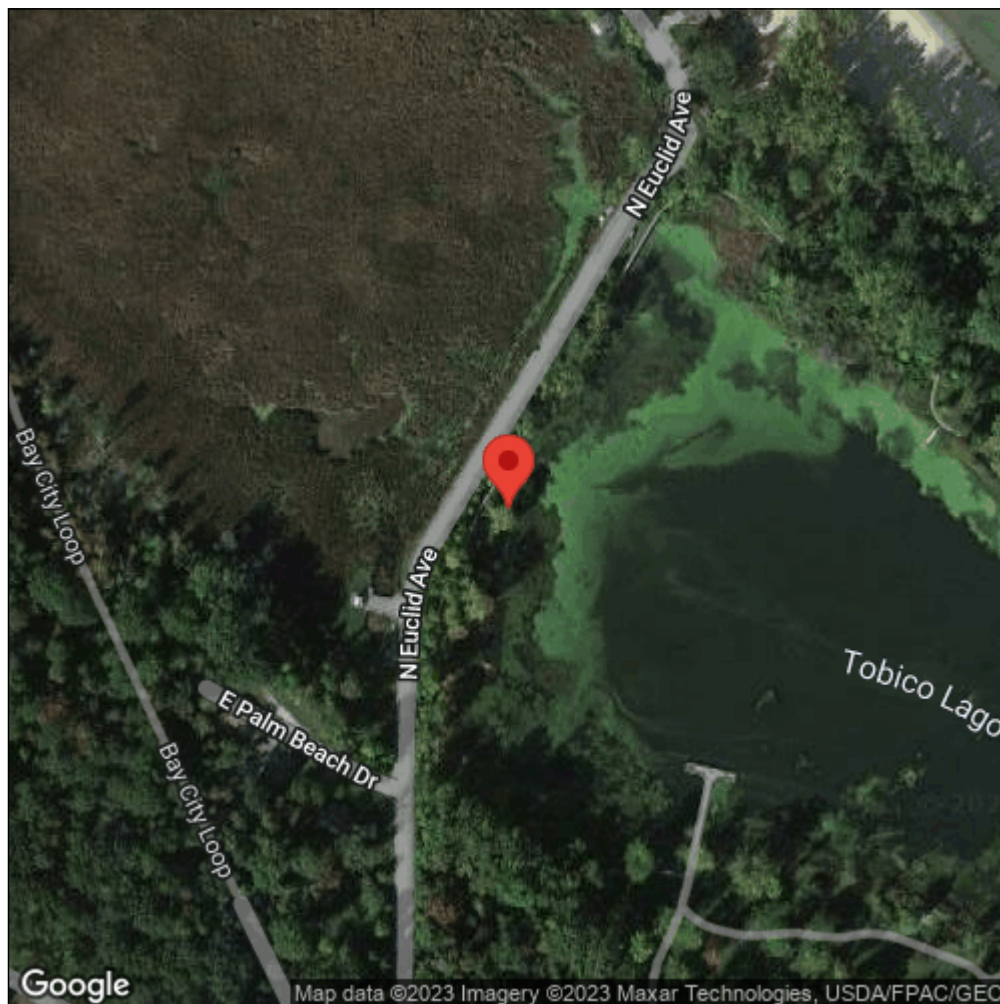
Observation Date: September 1, 2014

Date Entered: March 5, 2015

Comments: Original observer(s): WildType - BCWT0120 - Bay_City_RA - Verified: YES



Midwest Invasive Species
Information Network



Source: MISIN. 2023. Midwest Invasive Species Information Network. Michigan State University - Applied Spatial Ecology and Technical Services Laboratory. This record is available online at <https://www.misin.msu.edu/report/misin/submit/summary/printRecord.php?obs=reprint&id=475120>