



Presence Observation

Reed canarygrass

Phalaris arundinacea



Record ID: 475211

Observer: Alicia Ihnken

Source: MI DNR Parks and Recreation Division

Latitude: 42.343502

Longitude: -82.975501

Area: greater than 1 acre

Density: Dense

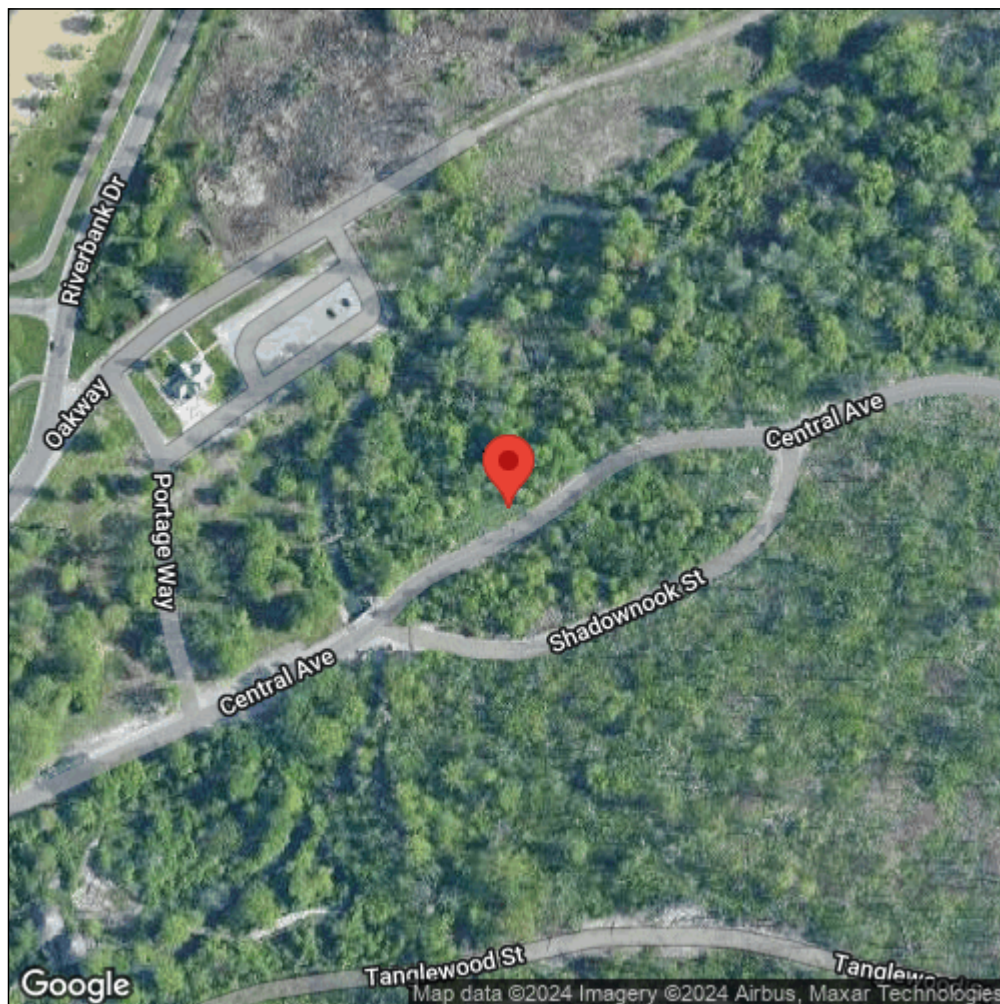
Observation Date: June 26, 2014

Date Entered: March 5, 2015

Comments: Original observer(s): PlantWise - BIPW0166 - Belle_Isle - Verified: YES



Midwest Invasive Species
Information Network



Source: MISIN. 2024. Midwest Invasive Species Information Network. Michigan State University - Applied Spatial Ecology and Technical Services Laboratory. This record is available online at <https://www.misin.msu.edu/report/misin/submit/summary/printRecord.php?obs=reprint&id=475211>