



## Presence Observation

### Reed canarygrass

*Phalaris arundinacea*



**Record ID:** 475299

**Observer:** Laurel Malvitz-Draper

**Source:** MI DNR Parks and Recreation Division

**Latitude:** 42.50936854

**Longitude:** -83.81952931

**Area:** less than 1000 sq ft

**Density:** Patchy

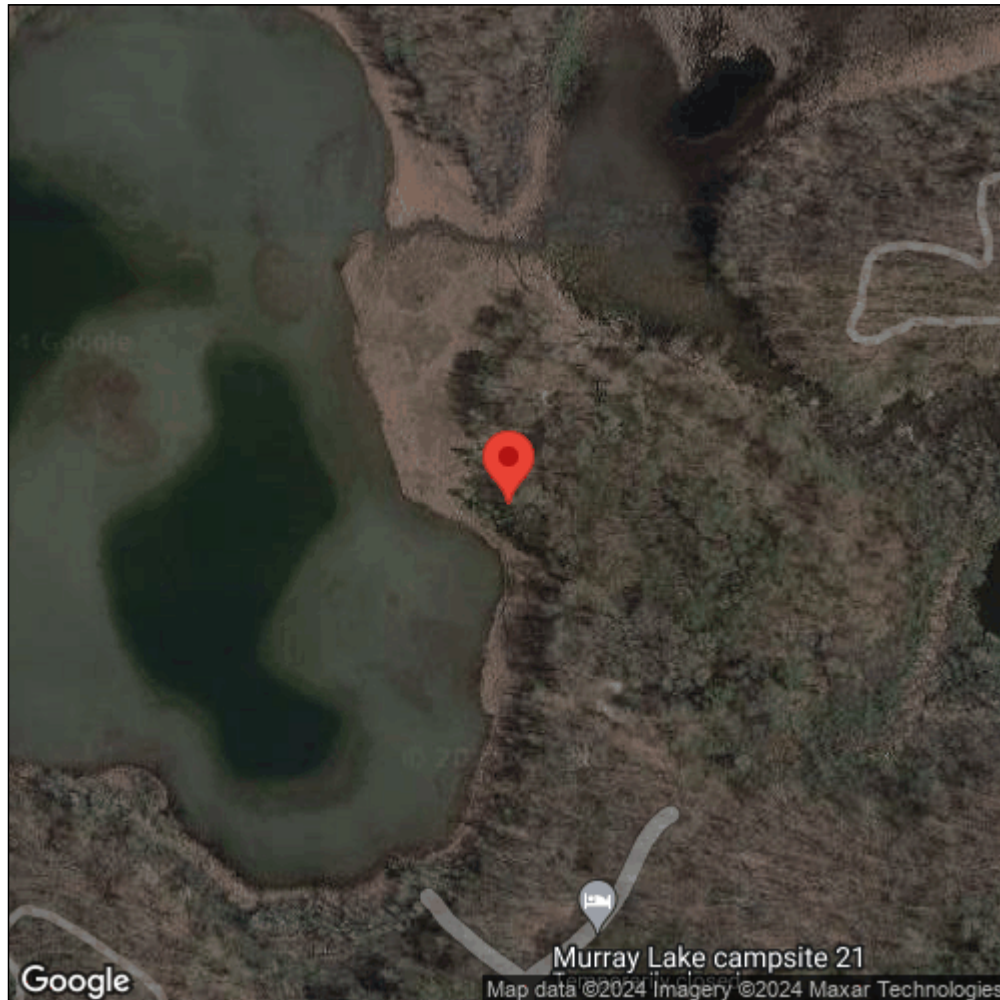
**Observation Date:** March 23, 2013

**Date Entered:** March 5, 2015

**Comments:** BTLM0033 - Brighton\_RA - Verified: NO



Midwest Invasive Species  
Information Network



Source: MISIN. 2024. Midwest Invasive Species Information Network. Michigan State University - Applied Spatial Ecology and Technical Services Laboratory. This record is available online at <https://www.misin.msu.edu/report/misin/submit/summary/printRecord.php?obs=reprint&id=475299>