



## Presence Observation

### Narrow-leaved cat-tail

*Typha angustifolia*



**Record ID:** 479051

**Observer:** Alicia Ihnken

**Source:** MI DNR Parks and Recreation Division

**Latitude:** 42.343422

**Longitude:** -82.965953

**Area:** 1000 sq ft to 1/2 acre

**Density:** Patchy

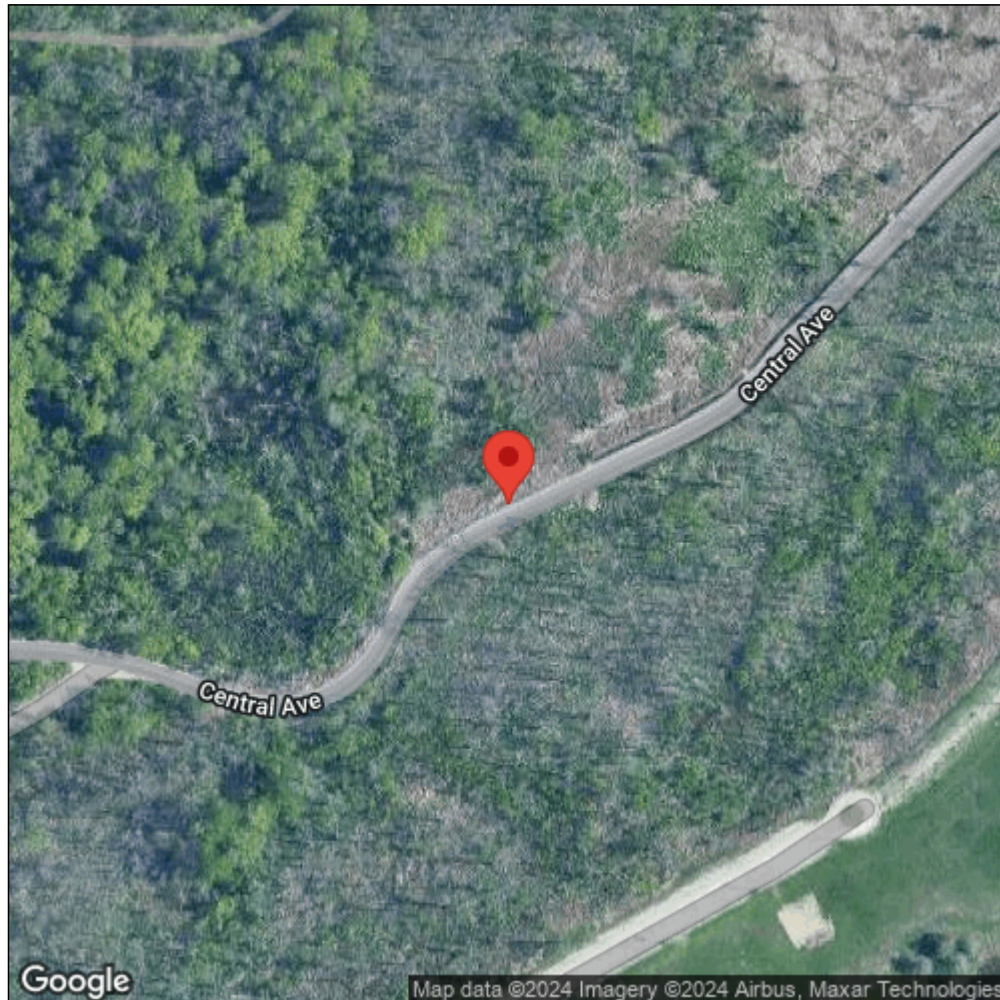
**Observation Date:** July 9, 2014

**Date Entered:** March 5, 2015

**Comments:** Original observer(s): PlantWise - BIPW0951 - Belle\_Isle



Midwest Invasive Species  
Information Network



Source: MISIN. 2024. Midwest Invasive Species Information Network. Michigan State University - Applied Spatial Ecology and Technical Services Laboratory. This record is available online at <https://www.misin.msu.edu/report/misin/submit/summary/printRecord.php?obs=reprint&id=479051>