



Midwest Invasive Species  
Information Network

## Presence Observation

### Purple loosestrife

*Lythrum salicaria*



**Record ID:** 48036

**Observer:** Great Lakes Indian Fish and Wildlife Commission

**Source:** Great Lakes Indian Fish and Wildlife Commission

**Latitude:** 46.51585

**Longitude:** -91.71593

**Area:** Not Reported

**Density:** Not Reported

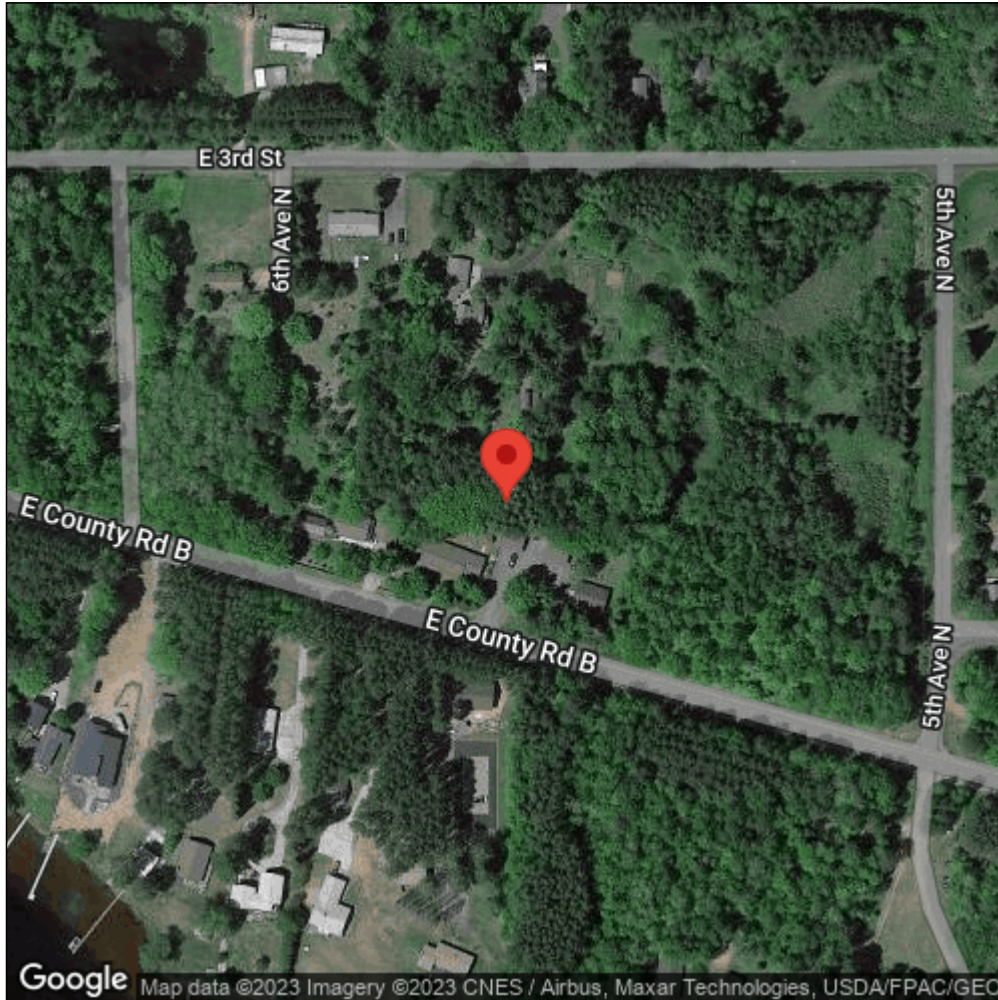
**Observation Date:** December 31, 1999

**Date Entered:** December 31, 1999

**Comments:** Great Lakes Indian Fish & Wildlife Commission - N. side of road 2X30  
M



Midwest Invasive Species  
Information Network



Source: MISIN. 2023. Midwest Invasive Species Information Network. Michigan State University - Applied Spatial Ecology and Technical Services Laboratory. This record is available online at <https://www.misin.msu.edu/report/misin/submit/summary/printRecord.php?obs=reprint&id=48036>