



Midwest Invasive Species  
Information Network

## Presence Observation

### Narrow-leaved cat-tail

*Typha angustifolia*



**Record ID:** 4895

**Observer:** Jessica Beachy

**Source:** Grand Traverse Conservation District

**Latitude:** 44.685032

**Longitude:** -85.627422

**Area:** 1000 sq ft to 1/2 acre

**Density:** Dense

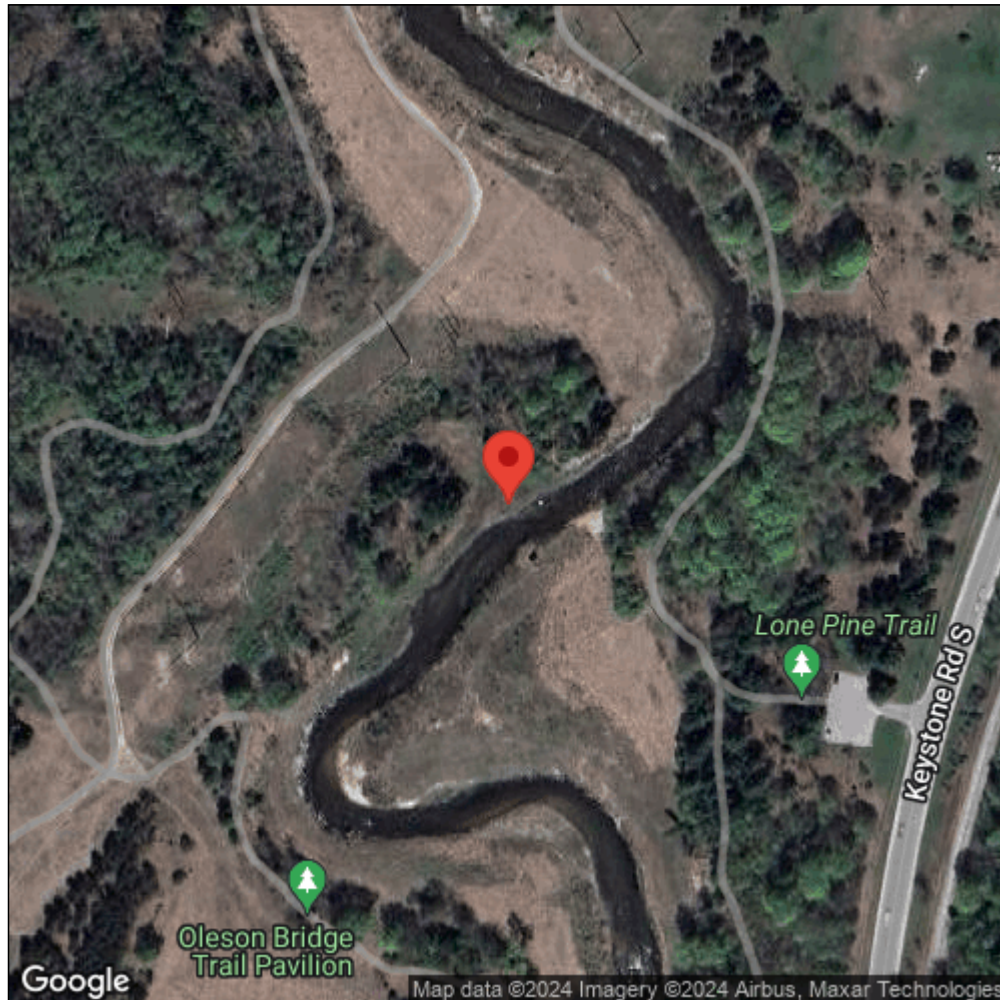
**Observation Date:** July 25, 2011

**Date Entered:** March 22, 2012

**Comments:** Waypoint Code: NEJBNC39333U



Midwest Invasive Species  
Information Network



Source: MISIN. 2024. Midwest Invasive Species Information Network. Michigan State University - Applied Spatial Ecology and Technical Services Laboratory. This record is available online at <https://www.misin.msu.edu/report/misin/submit/summary/printRecord.php?obs=reprint&id=4895>