



Presence Observation

Purple loosestrife

Lythrum salicaria



Record ID: 491448

Observer: Christopher Arrowood

Source: Langlade County Land Records & Regulations Dept

Latitude: 45.1002854

Longitude: -89.1536198

Area: Individual/Few/Several

Density: Dense

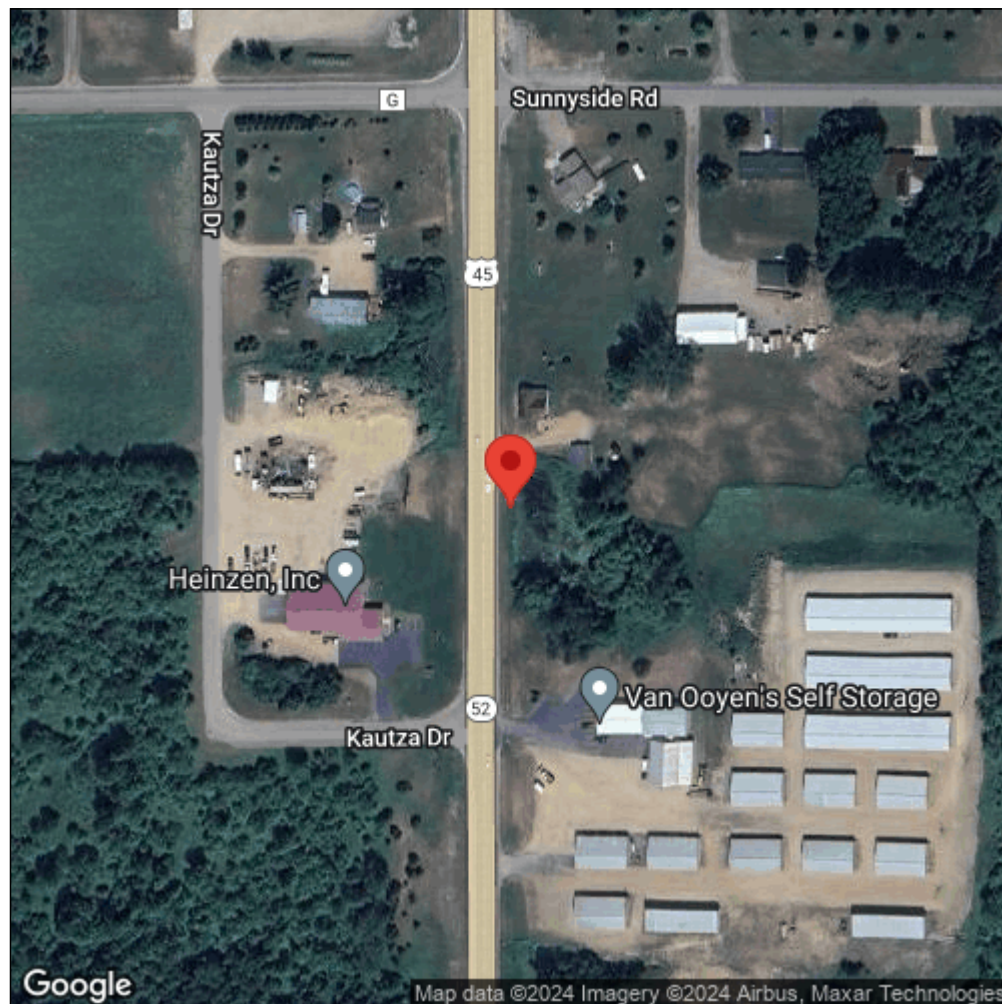
Observation Date: August 19, 2013

Date Entered: March 18, 2015

Comments:



Midwest Invasive Species
Information Network



Source: MISIN. 2024. Midwest Invasive Species Information Network. Michigan State University - Applied Spatial Ecology and Technical Services Laboratory.
This record is available online at <https://www.misin.msu.edu/report/misin/submit/summary/printRecord.php?obs=reprint&id=491448>