



## Presence Observation

### Purple loosestrife

*Lythrum salicaria*



**Record ID:** 495778

**Observer:** Greg Rekowski

**Source:** MI DNR Forest Resources Division

**Latitude:** 45.24553262

**Longitude:** -84.40720751

**Area:** Not Reported

**Density:** Sparse

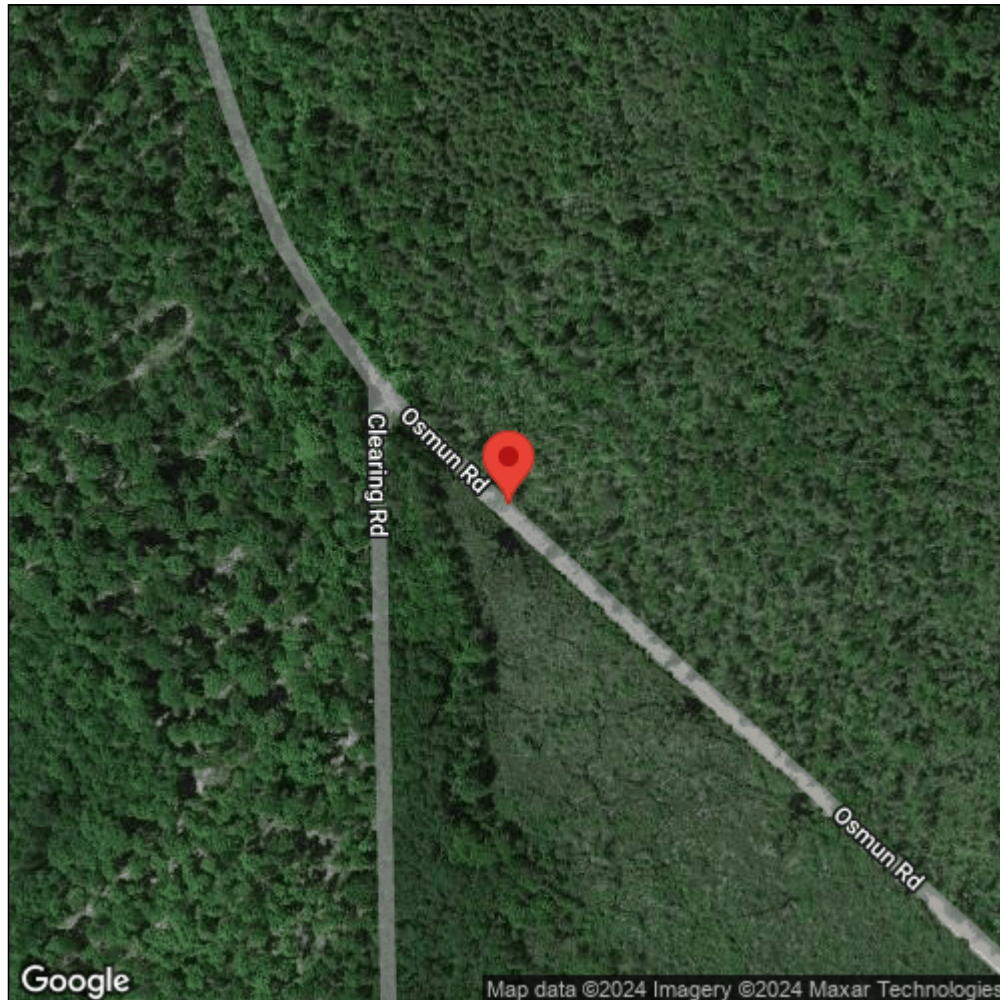
**Observation Date:** September 18, 2014

**Date Entered:** May 7, 2015

**Comments:**



Midwest Invasive Species  
Information Network



Source: MISIN. 2024. Midwest Invasive Species Information Network. Michigan State University - Applied Spatial Ecology and Technical Services Laboratory. This record is available online at <https://www.misin.msu.edu/report/misin/submit/summary/printRecord.php?obs=reprint&id=495778>