



## Presence Observation

### Purple loosestrife

*Lythrum salicaria*



**Record ID:** 503534

**Observer:** Teri Grout

**Source:** Upper Peninsula Invasives Council

**Latitude:** 46.400117

**Longitude:** -87.023163

**Area:** greater than 1 acre

**Density:** Patchy

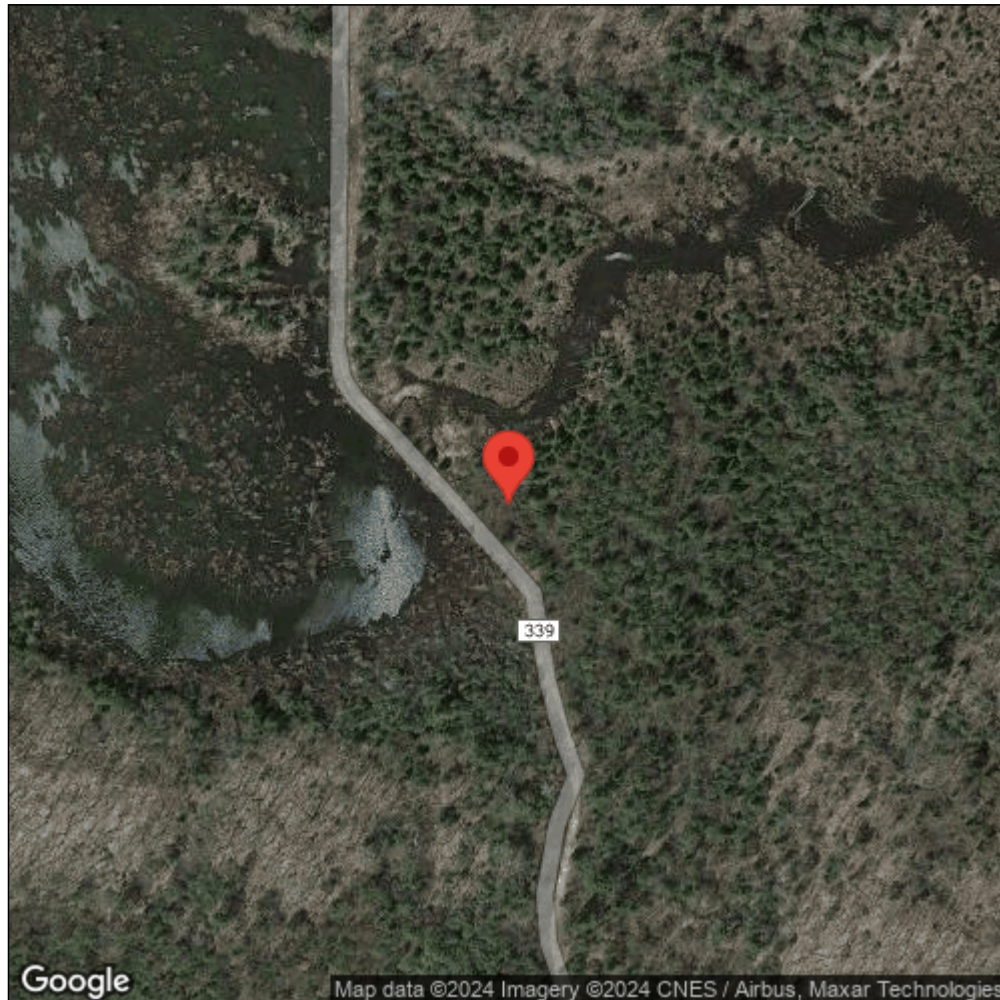
**Observation Date:** September 1, 2014

**Date Entered:** May 7, 2015

**Comments:** ALTGPL074 - Silver Lake - Treatment: 4 - Actual area: 5 - LocIdnt: 228



Midwest Invasive Species  
Information Network



Source: MISIN. 2024. Midwest Invasive Species Information Network. Michigan State University - Applied Spatial Ecology and Technical Services Laboratory. This record is available online at <https://www.misin.msu.edu/report/misin/submit/summary/printRecord.php?obs=reprint&id=503534>