



Presence Observation

Purple loosestrife

Lythrum salicaria



Record ID: 509587

Observer: Macy Doster

Source: MISIN

Latitude: 43.78602407

Longitude: -83.96793061

Area: Individual/Few/Several

Density: Patchy

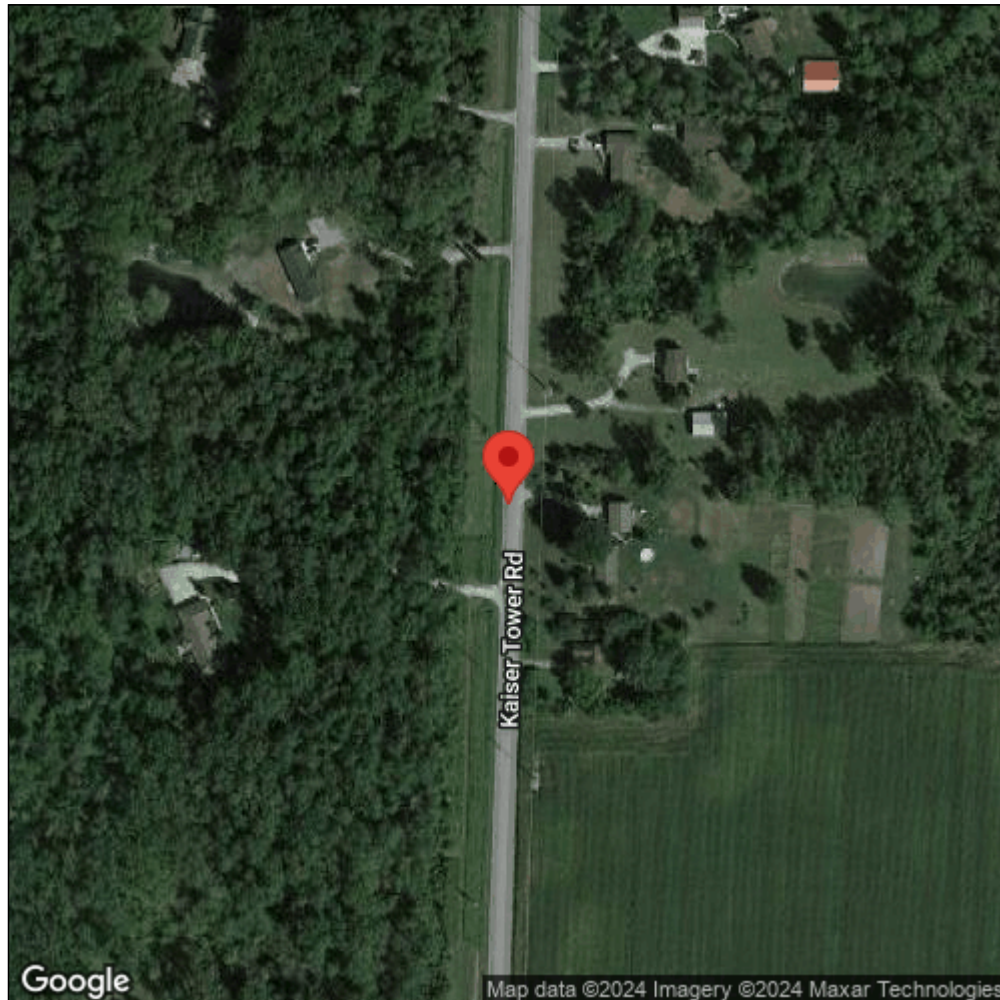
Observation Date: July 29, 2015

Date Entered: August 5, 2015

Comments: from iOS; gps accuracy: 5meters



Midwest Invasive Species
Information Network



Source: MISIN. 2024. Midwest Invasive Species Information Network. Michigan State University - Applied Spatial Ecology and Technical Services Laboratory. This record is available online at <https://www.misin.msu.edu/report/misin/submit/summary/printRecord.php?obs=reprint&id=509587>