



Midwest Invasive Species
Information Network

Presence Observation

Reed canarygrass

Phalaris arundinacea



Record ID: 511338

Observer: Ryan Wheeler

Source: MI DNR Forest Resource and Wildlife Divisions

Latitude: 43.263928

Longitude: -77.636829

Area: Not Reported

Density: Not Reported

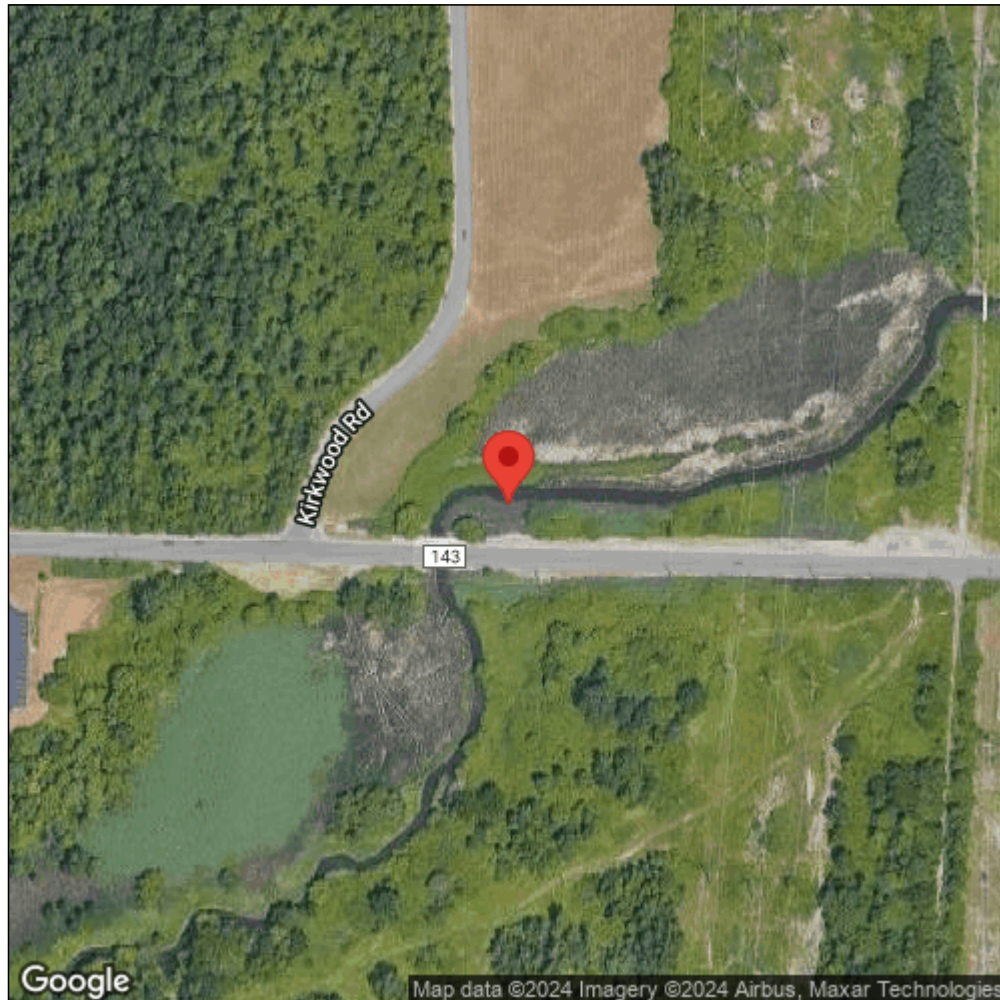
Observation Date: June 27, 2012

Date Entered: August 14, 2015

Comments: Great Lakes Coastal Wetland Mon Prj- Site: 53 - Transect: 3 - Point Number: 10 - Percent Cover (Area: 1 m. sq.): 60% - Team Name: D. Wilcox - Collector Name: B.Mudrzynski



Midwest Invasive Species
Information Network



Source: MISIN. 2024. Midwest Invasive Species Information Network. Michigan State University - Applied Spatial Ecology and Technical Services Laboratory. This record is available online at <https://www.misin.msu.edu/report/misin/submit/summary/printRecord.php?obs=reprint&id=511338>