



## Presence Observation

### Purple loosestrife

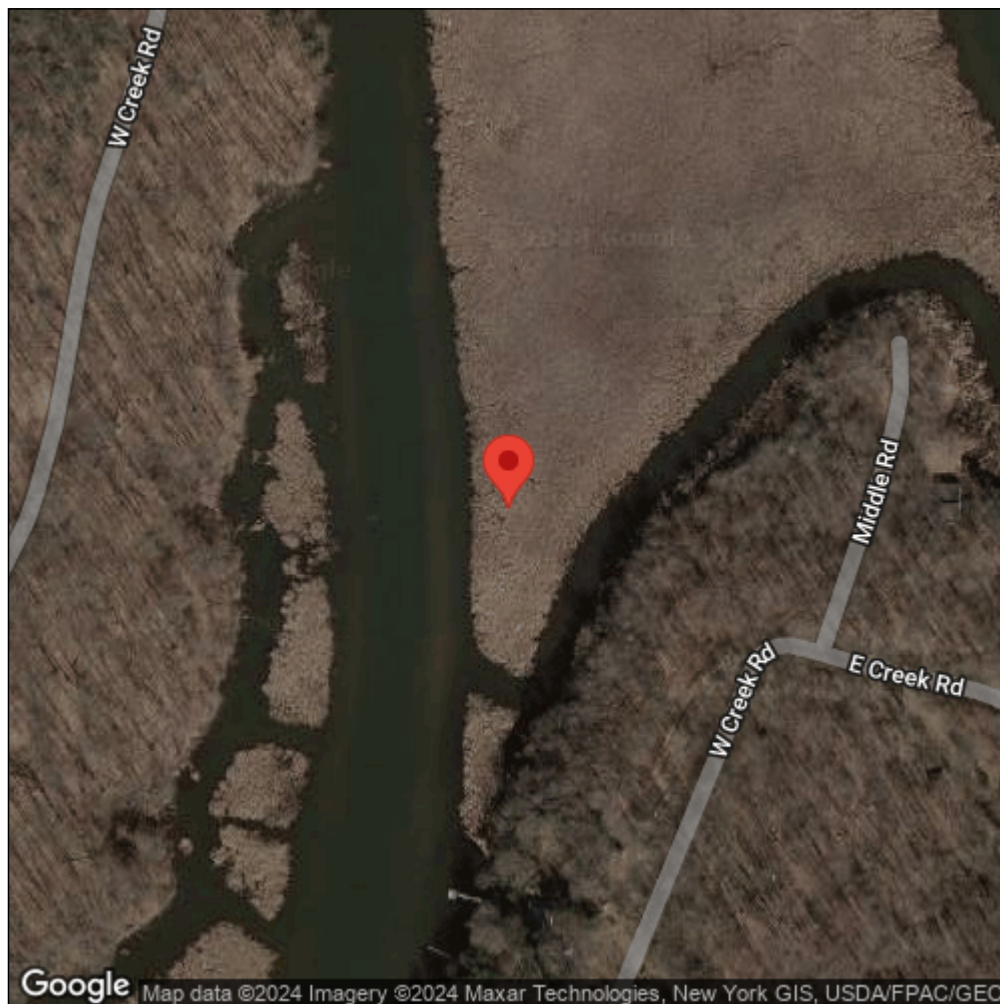
*Lythrum salicaria*



Record ID:	511727
Observer:	Ryan Wheeler
Source:	MI DNR Forest Resource and Wildlife Divisions
Latitude:	43.348909
Longitude:	-76.681152
Area:	Not Reported
Density:	Not Reported
Observation Date:	July 18, 2014
Date Entered:	August 14, 2015
Comments:	Great Lakes Coastal Wetland Mon Prj- Site: 86 - Transect: 3 - Point Number: 9 - Percent Cover (Area: 1 m. sq.): 10% - Team Name: D. Wilcox - Collector Name: B. Mudrzynski



Midwest Invasive Species  
Information Network



Source: MISIN. 2024. Midwest Invasive Species Information Network. Michigan State University - Applied Spatial Ecology and Technical Services Laboratory. This record is available online at <https://www.misin.msu.edu/report/misin/submit/summary/printRecord.php?obs=reprint&id=511727>