



## Presence Observation

### Purple loosestrife

*Lythrum salicaria*



**Record ID:** 512753

**Observer:** Ryan Wheeler

**Source:** MI DNR Forest Resource and Wildlife Divisions

**Latitude:** 43.673989

**Longitude:** -83.914855

**Area:** Not Reported

**Density:** Not Reported

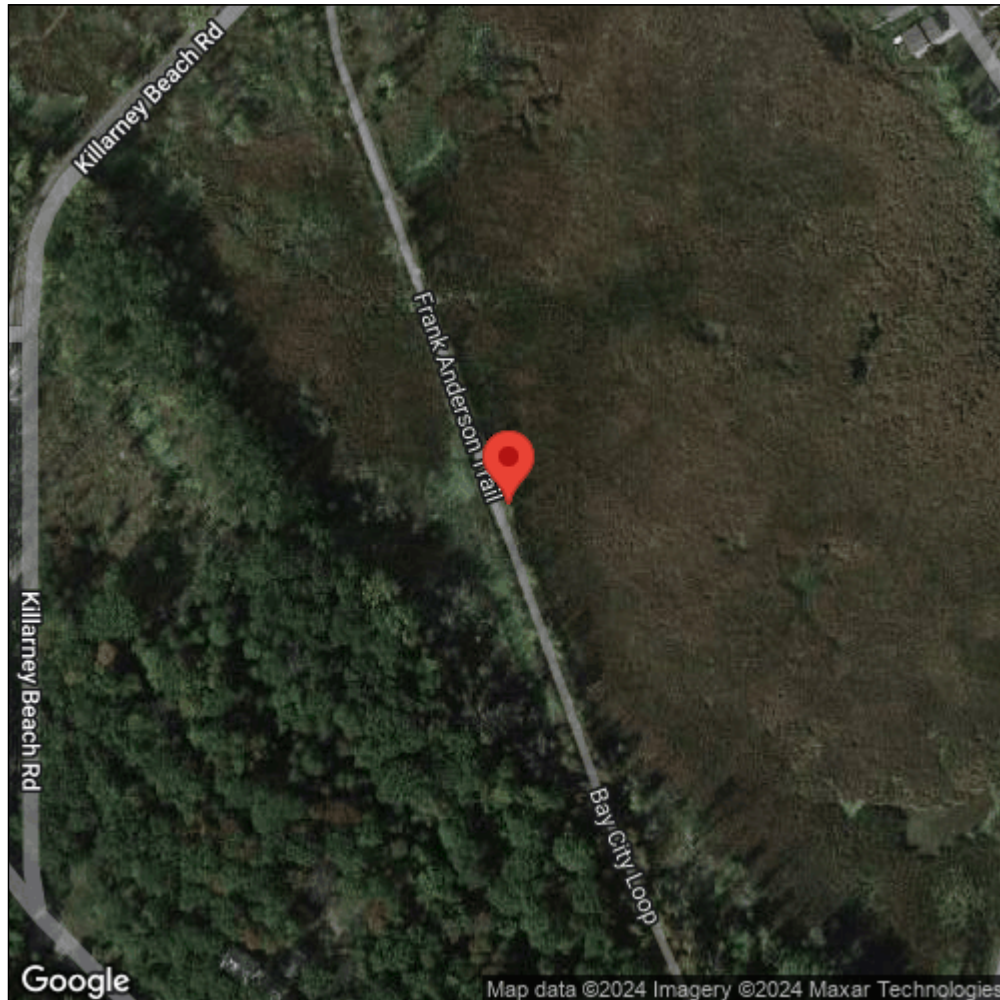
**Observation Date:** July 1, 2013

**Date Entered:** August 14, 2015

**Comments:** Great Lakes Coastal Wetland Mon Prj- Site: 488 - Transect: 2 - Point Number: 3 - Percent Cover (Area: 1 m. sq.): 40% - Team Name: D. Albert - Collector Name: S. Fraser



Midwest Invasive Species  
Information Network



Source: MISIN. 2024. Midwest Invasive Species Information Network. Michigan State University - Applied Spatial Ecology and Technical Services Laboratory. This record is available online at <https://www.misin.msu.edu/report/misin/submit/summary/printRecord.php?obs=reprint&id=512753>