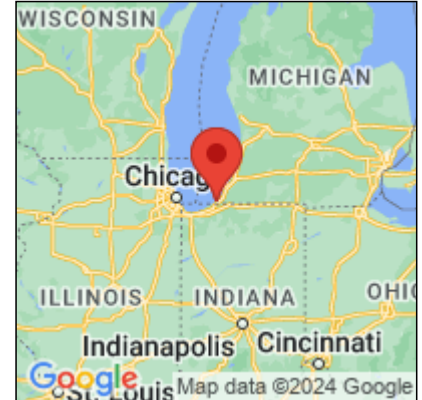




Presence Observation

Purple loosestrife

Lythrum salicaria



Record ID: 514836

Observer: Ryan Wheeler

Source: MI DNR Forest Resource and Wildlife Divisions

Latitude: 41.803612

Longitude: -86.734467

Area: Not Reported

Density: Not Reported

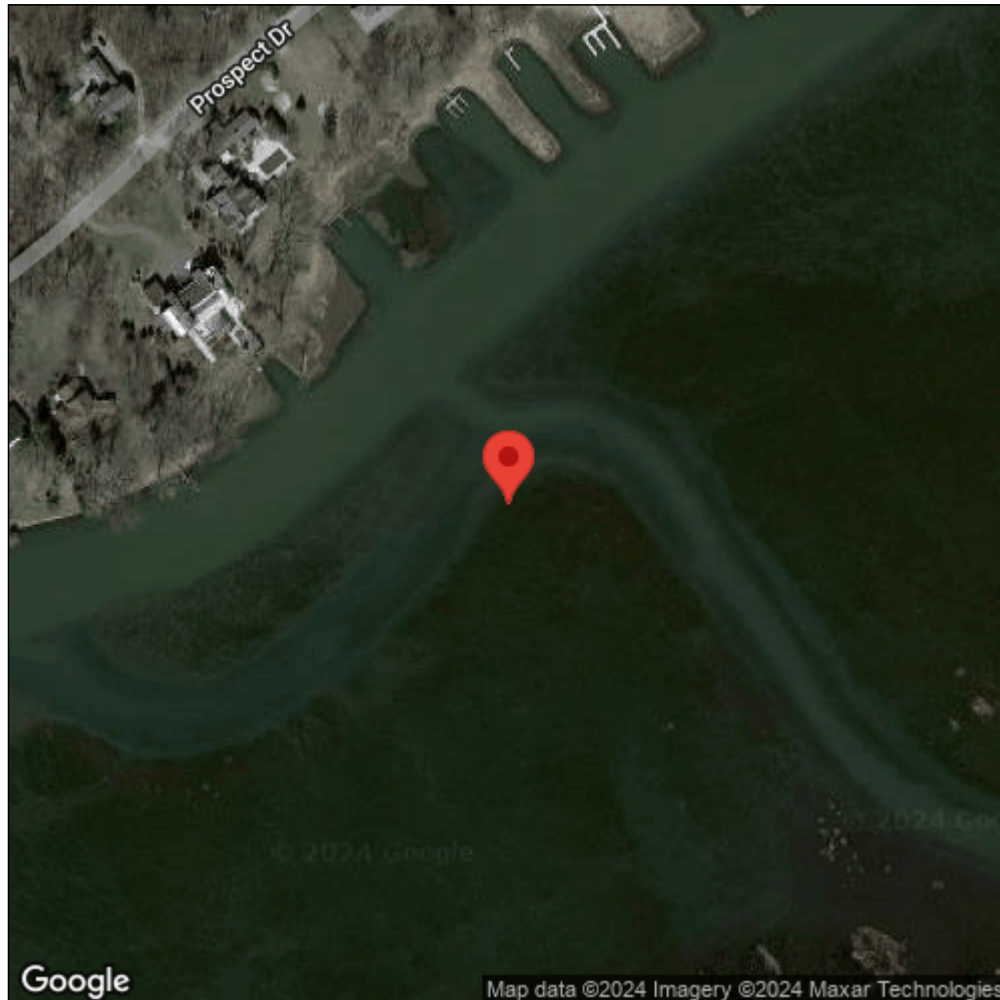
Observation Date: July 6, 2013

Date Entered: August 14, 2015

Comments: Great Lakes Coastal Wetland Mon Prj- Site: 1325 - Transect: 3 - Point Number: 8 - Percent Cover (Area: 1 m. sq.): 25% - Team Name: D. Albert - Collector Name: T. Lemein



Midwest Invasive Species
Information Network



Source: MISIN. 2024. Midwest Invasive Species Information Network. Michigan State University - Applied Spatial Ecology and Technical Services Laboratory. This record is available online at <https://www.misin.msu.edu/report/misin/submit/summary/printRecord.php?obs=reprint&id=514836>