



Midwest Invasive Species
Information Network

Presence Observation

Reed canarygrass

Phalaris arundinacea



Record ID: 514966

Observer: Ryan Wheeler

Source: MI DNR Forest Resource and Wildlife Divisions

Latitude: 44.846534

Longitude: -87.55899

Area: Not Reported

Density: Not Reported

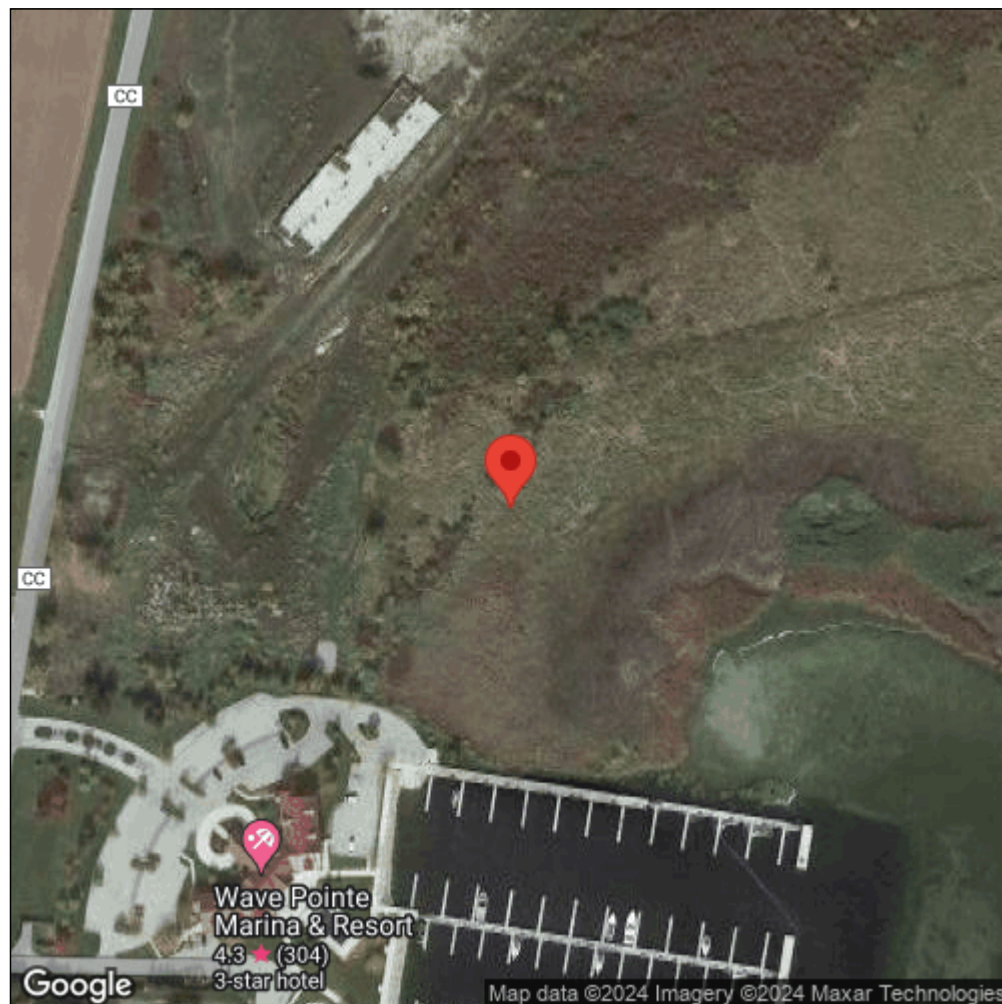
Observation Date: July 6, 2013

Date Entered: August 14, 2015

Comments: Great Lakes Coastal Wetland Mon Prj- Site: 1438 - Transect: 1 - Point Number: 3 - Percent Cover (Area: 1 m. sq.): 20% - Team Name: N. Danz - Collector Name: N.Dahlberg



Midwest Invasive Species
Information Network



Source: MISIN. 2024. Midwest Invasive Species Information Network. Michigan State University - Applied Spatial Ecology and Technical Services Laboratory.
This record is available online at <https://www.misin.msu.edu/report/misin/submit/summary/printRecord.php?obs=reprint&id=514966>