



Midwest Invasive Species  
Information Network

## Presence Observation

### Reed canarygrass

*Phalaris arundinacea*



**Record ID:** 514996

**Observer:** Ryan Wheeler

**Source:** MI DNR Forest Resource and Wildlife Divisions

**Latitude:** 44.846806

**Longitude:** -87.554881

**Area:** Not Reported

**Density:** Not Reported

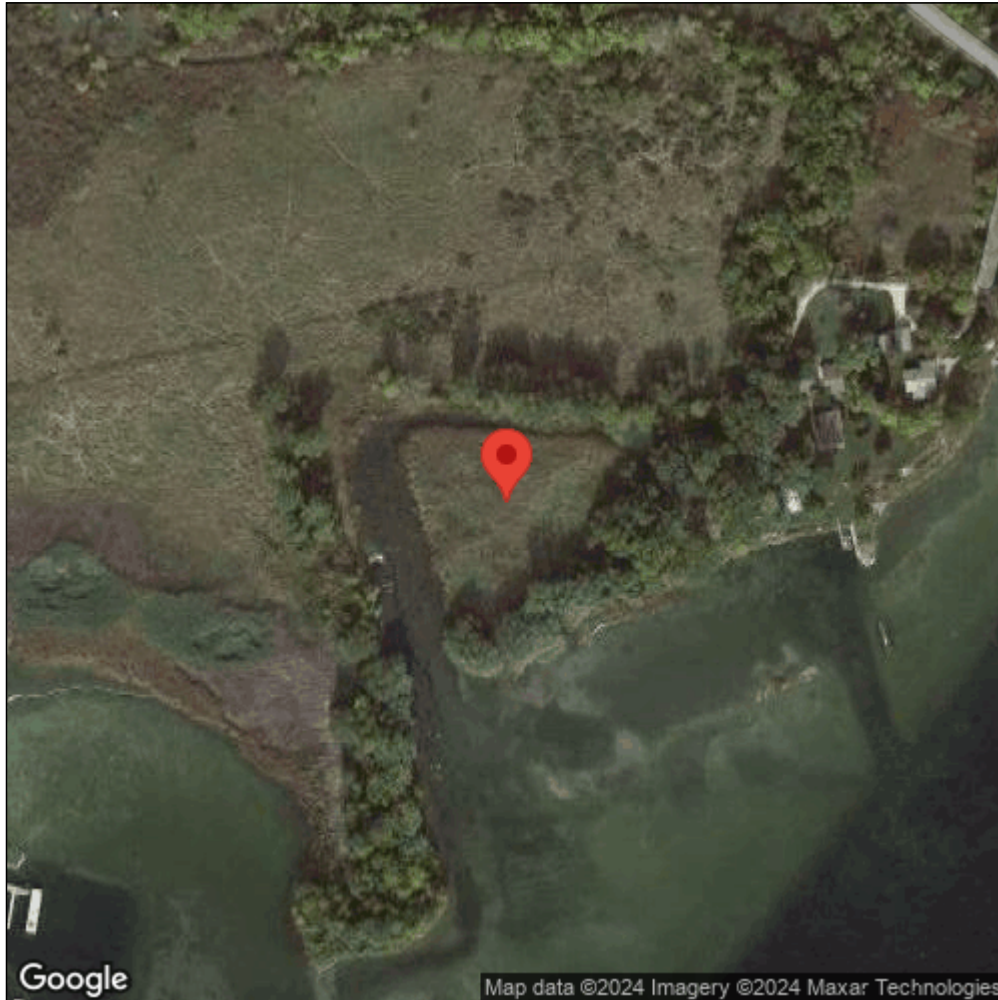
**Observation Date:** July 6, 2013

**Date Entered:** August 14, 2015

**Comments:** Great Lakes Coastal Wetland Mon Prj- Site: 1438 - Transect: 3 - Point Number: 3 - Percent Cover (Area: 1 m. sq.): 5% - Team Name: N. Danz - Collector Name: N.Dahlberg



Midwest Invasive Species  
Information Network



Source: MISIN. 2024. Midwest Invasive Species Information Network. Michigan State University - Applied Spatial Ecology and Technical Services Laboratory. This record is available online at <https://www.misin.msu.edu/report/misin/submit/summary/printRecord.php?obs=reprint&id=514996>